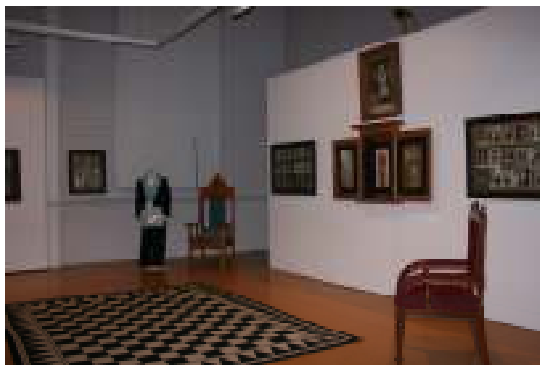




Freemasons Museum Display

A fantastic way to promote Freemasonry in your town or city is to arrange for the Freemasons Travelling Museum display to be exhibited in a local museum. It is an ideal way to inform the public and provides a focus point for discussion about what we do. The foundation of the exhibition is already fully curated and comes with a range of display cases. Local brethren can arrange to provide items of both historic and contemporary, local Masonic significance.



As a starting point, Lodges or Districts desiring to see the Travelling Museum displayed in their local area should task a brother, or brethren, to manage this initiative. Next that brother should liaise with their local museum to ascertain if that museum would be interested to feature the display. Putting on the exhibition is ideally suited, but not essential, to commemorate a significant milestone of freemasonry in the town or city, or perhaps of a particular Lodge.

If there is interest by a museum, contact the Grand Lodge office, secretary@freemasons.co.nz who will arrange for the museum curator of the Travelling Museum to liaise with both your contact and the local museum itself. Note that the local museum or Lodge / District need to meet the cost of transporting the display from its storage place to the local museum and return.

As well as working with the museum / gallery on the display, ensure the Lodge or District partner then in publicity of the event including holding an opening night. Having Freemasons attending during key visiting periods is also a good idea.

