

# Making a difference in New Zealand







## Contents

Who We Are and Our Board	1
Putting Ideas into Action	5
Our Membership	7
The Freemasons Charity	8
The year in pictures	13
Financial Snapshot	15



## A year *like no other*

A message from our Grand Master, MW Bro Graham J. Wrigley

It is my pleasure to present this Annual Report which covers the period from 1 July 2021 to 30 June 2022.

As New Zealand dealt with the impact of lockdowns and restrictions imposed by our government, we were still able to achieve many of our planned activities against the Strategic Plan.

Our thrust for the year was to build towards our 'one vision, one goal and one team' approach, and we have been encouraged by the commitment that many of our Brethren have made towards this. We still have some distance to travel, but we are confident that over the next few years we will be a long way down the path towards thriving Lodges, engaged Brethren and growing membership.

The year's challenges had a major impact on our Lodges, with many unable to meet in our traditional manner. However, we embraced technology through Zoom meetings and Facebook Live sessions, and demonstrated the true masonic values of support and comfort to our more vulnerable members.

We still have many challenges ahead of us due to the worldwide pandemic, as costs increase and the delayed investment in our infrastructure starts to show. These issues will need to be addressed over the coming years.

It is essential that we acknowledge the outstanding work that has been the cornerstone of our achievements this year. All Lodges have worked hard to make a difference, and we have seen incredible engagement with some of our charitable projects.

Although delayed, our relationship and support to the Special Olympics saw some incredible fundraising and engagement at local levels to support the special athletes. Our relationships with New Zealand's Universities continue and our annual scholarships are one of our flagship programmes.

Our thanks go to you all for the commitment and loyalty shown to the Craft over the last 12 months. While the Brethren have worked hard, we must acknowledge the outstanding work achieved by our National Office led by Mark Cassidy as the Executive Director. The National Office team made sure that we have 'moved with the times' and provided exceptional support to our Lodges.

MW Bro Graham J. Wrigley  
Grand Master

## Our Organisation

The Grand Lodge of New Zealand is an unincorporated Society trading under the name of Freemasons New Zealand. Its 5,332 brethren are members of 193 Lodges across New Zealand. Each Lodge operates under a charter issued by The Grand Lodge.

The assets of The Grand Lodge are held in trust by the Grand Lodge Trustees under an act of

Parliament. These assets include the proceeds from the sale of Lodges held in the Masonic Building Fund to be used for the acquiring and preserving of buildings or land.

The Grand Lodge has established a separate registered charity CC46016 with its own trust deed. It's known as The Freemasons Charity and is devoted solely to charity within New Zealand.

## A Brief History

Freemasonry was established officially when the first Grand Lodge was formed in 1717 in England. In reality, it is much older than that, dating back to late 13th-century stonemasons' guilds.

In 1842, Freemasonry came to New Zealand with Lodges from the English, Irish and Scottish Constitutions.

The Grand Lodge of New Zealand was formed in 1890. As of 30th June 2022, there are 193 Lodges in New Zealand, from Kaitia to the Bluff, with a total of 5,332 members.

## Our Structure and Governance

### Grand Master

Our ceremonial head is responsible for the overall administration of The Grand Lodge of New Zealand.

### Board of General Purposes

8 appointed members look after The Grand Lodge of New Zealand (governance and policy) between triennial Grand Communications.

### Grand Lodge Trustees

Up to 6 members nominated by the Board of General Purposes and elected at the Grand Communication. They hold the assets of The Grand Lodge of New Zealand on behalf of its members, monitor investments and administer the Potter, Rankin and Lawson-Smith masonic charitable trusts.

### Audit & Risk Committee

An independent committee of the Board of General Purposes that oversees and advises on financial and other risks. They ensure that The Grand Lodge of New Zealand properly manages its risk and complies with its statutory obligations in New Zealand.



### Freemasons Charity Management Committee

An independent committee, established under the Charitable Trust Deed, to administer and manage The Freemasons Charity. It oversees the prudent management of the Trust's investments. It is made up of the Deputy Grand Master, the Grand Almoner, two appointed members and one person seconded by the Board of General Purposes.





## Meet *our Board*

### **Rob Angelo** *President*



Rob served with the New Zealand Defence Force for thirty years. He has wide experience and training in achieving strategic objectives through leadership, team building, governance and operations with senior management. He has dealt with local issues and developments on Community and Council-managed Committees and trustee responsibilities on Charitable Trusts.

### **Graham Wrigley** *Grand Master*



Graham enjoyed a 32-year career in the New Zealand Fire Service at senior levels. He received executive management training at the Fire Service College in England and was the first International President of the Institution of Fire Engineers. In the New Zealand Red Cross, Graham ran the commercial training and products business unit. He is widely-travelled and has worked in Fiji and Vanuatu.

### **Jim Watt** *Deputy Grand Master*



Jim brings a broad range of skills gained from 40-plus years of managing his own event management and hospitality business. He also has a sound knowledge of our Ceremonial Rules and the Book of Constitution.

### **Noel King** *Grand Registrar*



A fourth-generation NZ Freemason, Noel is a Past Master Mangere Lodge 330 (2004), foundation member Lodge Kauri 474 and Lodge Matariki 476. He is a director of investigations and security companies and member of NZ Security Association. Noel qualified with a BBS in accounting and LLB as a lawyer. He has practised law as a barrister.

### **Mike Cadman** *Grand Treasurer*



Mike has extensive experience in senior management roles as a Director, General Manager/ Managing Director and Chief Financial Officer. His experience includes Management Accounting, Internal Control and Audit, Systems Review and Implementation, HR, Inventory Management, Health and Safety, and Strategic and Business Planning.

### **Jim McLaggan** *Board Appointee Northern*



Jim has been a quarantine officer with MPI for 30 years holding several roles in people and programme management, information systems and public relations. A Freemason since 1994, he has held grand rank in Craft and Royal Arch masonry and is a member of many masonic orders.

### **Warwick Bell** *Board Appointee Central*



Warwick is a Registered Architect and Company Director. He has extensive Board governance and strategic leadership experience. Including NZQA, NZ Industry Training Federation and as Chair of NZ Registered Architects Board and Chair of Trustees NZ Scout Youth Foundation. A Freemason since 1989, Warwick is a Past District GM and held other appointments.

### **Bruce Pagan** *Board Appointee Southern*



Bruce says, "I aim to have and hold values; have the courage to take risks and make mistakes; support the uniqueness of each individual and to build a great team. I want to enjoy my life in partnership with my family. I want to be the best husband, dad, and friend that I can and Freemasonry fits snugly in that mix!"

### **Mark Cassidy** *Executive Director*



Originally from the UK, where he was a Lawyer, Mark has held senior positions in the Wellington Community Trust, Mary Potter Hospice and Port Nicholson Rotary Club. He is interested in self-development, building relationships and helping others. These qualities are perfect for his role as Executive Director of Freemasons New Zealand, which he has held since December 2019.



## Grand Lodge Trustees

MW Bro Selwyn Cooper (Chair)  
 RW Bro Michael Scott  
 RW Bro Les Green  
 RW Bro Eddie Eeles  
 RW Bro Stephen Salmon  
 RW Bro Neville Patrick

## Audit and Risk Committee

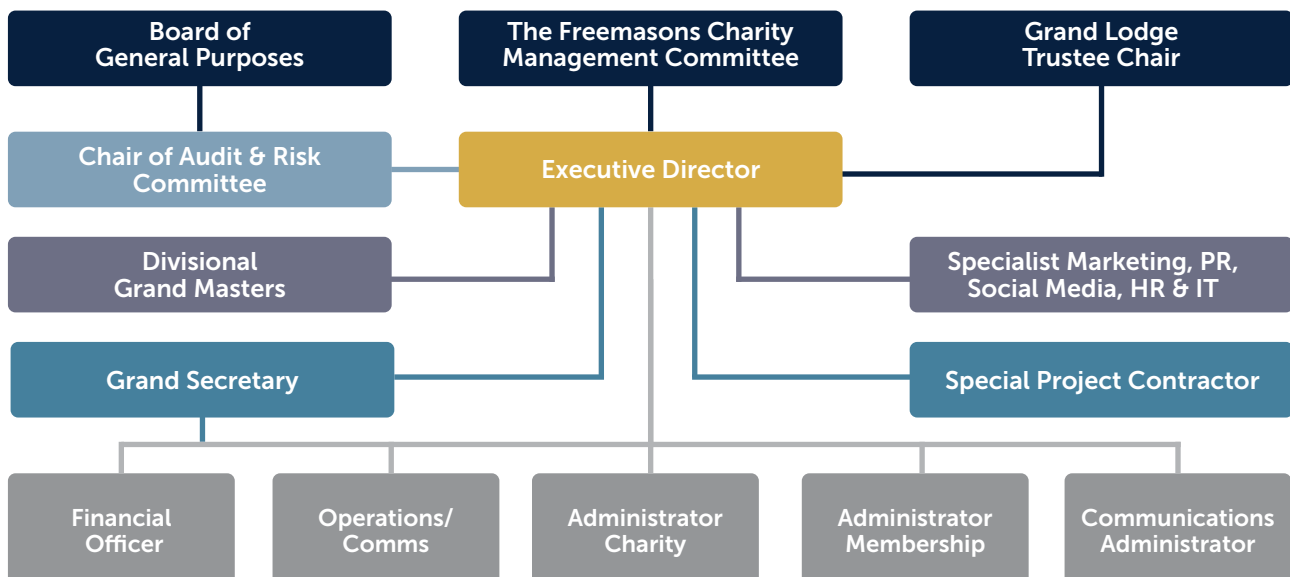
W Bro Graeme Gibson (Chair)  
 RW Bro Jim Watt  
 VW Bro Mike Cadman  
 VW Bro Noel King  
 VW Bro Darren Shadbolt  
 Mark Cassidy (Executive Director in attendance)

## TFCMC

RW Bro Jim Watt  
 VW Bro Bob Monson  
 Amanda Chappel (Independent Member)  
 W Bro Nick Langley  
 W Bro Jeff Mear



## Operational *National Office Organisational Chart*







## National Office

The Executive Director and team of five provide Membership Services, including Lodge, membership and administration support.

They provide support to The Freemasons Charity and Charitable Trust.

Our National Office promotes Freemasonry through our channels including our Website, Social Media and quarterly Magazine.

The National Office also works with external specialists to deliver our Strategic Plan and key projects.



## Our Vision

To add value to society by supporting good men, their families and their communities.

The principal aim of Freemasonry is the promotion of universal and lasting happiness of all people.

## Our Principles

Freemasonry is founded upon the principles of tolerance and acceptance, care, kindness, honesty and trust.

For every man who aspires to be a better person, Freemasonry helps you develop the knowledge and skills to be the best you can be – through a unique mix of ceremony, fresh thinking and good works in an enjoyable and supportive environment, because only Freemasonry uses long-proven principles that empower you to unlock your full potential, for a better future.





## Putting ideas *into action*

### Public Perception

*In March 2022 we surveyed 500 people*, a sample of the general population aged 18+ years, to gain insights about New Zealanders' attitudes towards Freemasonry.

#### Key takeouts:

- Likelihood of joining Freemasons is low among men who would be interested in joining a membership organisation
- There is a low awareness of Freemasonry, what it is and does
- Perception of Freemasonry is limited due to this lack of knowledge. It is still considered a "secret men-only organisation"
- Less than half believed it to be a community minded and charitable organisation.

**However, there is a significant opportunity...**

**42% of men surveyed...**  
**had a moderate to high interest in joining a membership organisation that shared the same values as Freemasonry.**

The Board has agreed to undertake an Awareness & Acquisition programme to be rolled out over two years.

### Some Key Projects

#### Building One Team

Significant effort has gone into building relationships across and beyond the organisation. Members are more involved in developing Lodge Champions and Lodges. Districts and Divisions are coming together to support national and local charitable and community initiatives.

We are unifying our branding across a single positioning line:

**"Making a difference in New Zealand"**

#### Enhancing Technology

We are putting a focus on administrative efficiencies, effectively delivering services and enhancing experiences for members:

**SmartyGrants** - An automated granting system has been rolled out across the organisation to manage Lodge Projects and charitable grants. It provides transparency and automated reporting for users and regulators. It can be upscaled to undertake services for all Masonic Charitable entities managed by Freemasons.



**Membership System replacement** - Our system is 10+ years old. After a review of requirements and available options, a business case will be considered by The Board in 2023, prior to a new system being rolled out.

**Enhanced Governance** - The Board is improving Governance oversight and transparency. BoardPro software is available to the Board of General Purposes, Grand Lodge Trustees and all Committees of the Board.

A review, with The Grand Lodge Trustees, will ensure the Board's "All-of-Governance structure" is fit-for-purpose, more transparent, accountable to members and cost-effective.

### Developing Local Lodge Capability

Lodges will take control of their destinies by focusing on and measuring their Financial Sustainability, Membership Growth, Community and Charitable initiatives and improvements where necessary.

District and Lodge Champions are a vital part of helping Lodges develop. Templates and tools are being made available for local lodges to use.

## Looking Forward

### Retaining And Growing Our Membership

Based on research and member feedback, The Board supported a two-year Awareness and Acquisition Programme campaign which includes:

#### **Faces of Freemasonry on Social media**

Showcasing Freemasons on social media, busting myths, profiling charitable work.

#### **Freemasonry documentary**

A video about 'who we are and what we do' is in production for a 2023 release.

### Growing Profile

Achieving greater visibility in the community is a priority, including showing Freemasons in action at the Freemasons New Zealand Special Olympics National Summer Games in Hamilton. National Office will support a wide variety of national and local events.

### Better communication

Effective communication will play a vital role as we build and strengthen our community. Engagement in our social media, website and magazine continues to grow.



### Freemasons NZ Social Media

Facebook	22,660 followers
Instagram	2,784 followers
Twitter	1,442 followers
LinkedIn	1,580 followers
YouTube FMNZ Channel	561 followers
TikTok	4,418 followers

Our TikTok channel is run by a masonic third party on behalf of Freemasons NZ, and belongs to a world wide Freemasons group with 1.12 million followers.

### freemasonsNZ.org Website

Users	4,127 (88% are from New Zealand)
New Users	3,887
Sessions	18,162
Page views	235,000

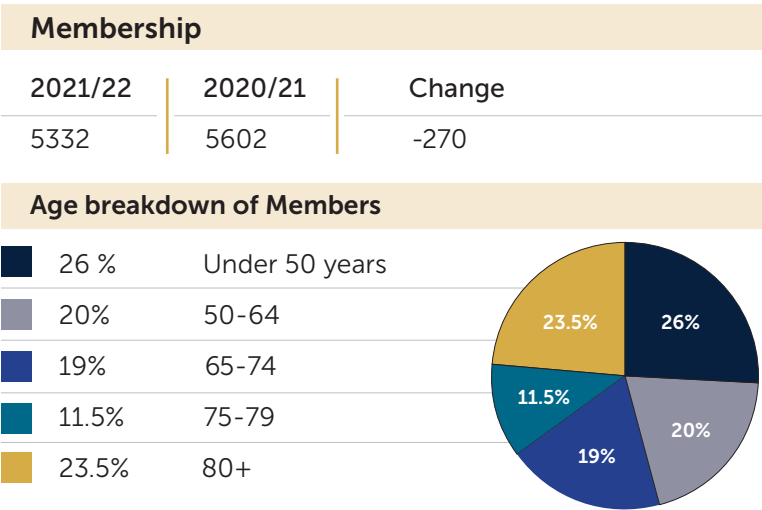
(13 pages per session with an average session duration of 10 minutes).



# We're growing *younger*

## Our membership at a glance

Our membership is declining, but at a slower rate. We're becoming a younger organisation, over time. Our challenge is to increase new younger member numbers while reducing our resignations, particularly under 65-year-olds.



Enquiries received through National Office to join 360					
Initiates	Transfers	Total	Resignations	Deaths	Total
165	78	243	347	166	513

Age breakdown of New Initiates	
4.5%	Over 60 years
24.5 %	41-50 years
12%	51-60 years
59 %	Under the age of 40 years and 20% of those are 30 or Under

Age Breakdown of Resignations		Age Breakdown of deaths	
38%	Under 50 years	3%	50-64 years
22.5%	50-64	6.5%	65-74 years
12.5%	65-74	12%	75-79 years
7%	75-79	78.5%	80+ years

Lodges		
2021/22	2020/21	Change
193	197	-4





## We grow richer *by giving*

---

### Here for the long haul

*The aim of The Freemasons Charity (TFC) is to achieve positive long-term outcomes.*

We build long-term relationships with other charities that share our values.  
Our long-term investment strategy is designed to match our long-term aims.  
The markets can be volatile, so our short-term returns may be negative, in some years.

***We don't waiver. We stay the course and take the long-term view.***

---

### Feeling the effects of COVID-19

The 2021/22 financial year began as the 2020/21 year ended. COVID-19 dominated the picture. Severe restrictions on our Lodges' activities meant applications for support of charitable projects at a Lodge and District level are way down on previous years. Even so, The Freemasons Charity supported 67 Lodge and District projects. \$189,850 from the Charity was distributed into our communities, in addition to the funds raised by the Lodges and Districts.



### Special Olympics 2021 to be held in 2022

COVID-19 meant that the 2021 Special Olympics Summer Games didn't go ahead in 2021. The good news is that it will happen in December 2022. Camp Purple and Camp Quality were also postponed. The Royal Society postponed its annual camp for science students, Powering Potential, not once but twice.







*Just a few of this years recipients of Freemason Scholarships*

### Rethinking scholarship presentations

The pandemic forced a rethink on our annual Freemasons Scholarship Presentations. These were to be held at Parliament but, with concerns over meeting number restrictions and other issues, Regional Presentations were held in each Division. Recipients had the opportunity to attend the one that best suited them and their supporters.

*The approach was a great success so we're now considering whether they should again be held in the Divisions next year.*

### Helping hands in tough times

We helped 57 individuals with Critical Needs Grants and a further 11 Individuals Assistance Grants **totalling \$88,362**. We anticipated a greater call for assistance grants during and following the COVID-19 lockdowns. Happily, these did not eventuate. We continue to encourage our District Charity Officers and Divisional Grand Almoners to monitor their respective areas and to provide help when and where it's needed.

### We're improving approvals

In the New Year, we implemented outcome-based criteria for the approval of applications to the Charity for support and the adopting of the new 'Mission and Vision Statement'. This brings The Freemasons Charity into line with current charitable sector thinking. This new approach will make it much easier for District Charity Officers and Divisional Grand Almoners to approve projects. This new approval process means acceptance of an application will be based on what the eventual outcome will be for the local community and society as a whole.

### Smart new charity software

After plenty of discussion, we settled on our new charity software. SmartyGrants. It's now fully operational and provides a full online application process and full detailed reporting. Special thanks to the staff at National Office for all their time and effort spent on bringing this online. Thanks to the Divisional Grand Almoners, District Charity Officers and Lodge Secretaries who participated in the SmartyGrants trial and implementation.





## Many thanks to all who helped

The Freemasons Charity (TFC) would like to say 'a special thank you' to VW Bro Jeff Elston whose term as Divisional Grand Almoner, Southern ended. Jeff was a passionate supporter of the Charity and a great advocate for it in his Division. Jeff is replaced by VW Bro Dai Eveleigh.

We acknowledge the work of all staff at The National Office for their efforts through trying and disruptive times, and to our Grand Almoner, Divisional Grand Almoners and our District Charity Officers who helped make sure the Charity was able to continue its excellent work in our communities.



***Finally, thanks to all members of The Freemasons Charity Management Committee for their work. Their foresight and commitment is helping steer The Freemasons Charity into new and exciting times.***

## 1. Benevolence and Almoning

### ***Individual & Critical Needs Grants***

TFC assisted 57 individuals by providing funding of \$66,800.00 through Critical Needs grants, and a further \$21,562.00 with 11 Individuals Assistance grants **totalling \$88,362.00.**

### **Hospital Packs Granted**

TFC granted **\$3,009.00** for Hospital Packs.



## 2. Enhancing Our Communities

### ***Lodge & District Projects***

TFC supports these local Lodge & District projects by matching funds raised by the Lodge 1:1, a District project may qualify for 2:1 funding from TFC.

**Over this period TFC funded Lodge & District Projects in total: \$189,850.00.**

### ***Over the 2021/22 period...***

Northern Division initiated 25 Lodge/District Projects and raised and contributed \$35,140.10.

**TFC funded \$83,737.00**

Central Division initiated 18 Lodge/District Projects and raised and contributed \$45,276.35.

**TFC funded \$70,842.00**

Southern Division initiated 24 Lodge/District Projects and raised and contributed \$41,948.13.

**TFC funded \$35,271.00**

\*some may be applications for funding for a SONZ Donation





### ***Special Olympics New Zealand (SONZ)***

Lodges collectively donated a total amount of **\$72,283.46 to SONZ** and TFC matched the amount raised by Lodges to donate an additional **\$75,000.00** Additionally in 2022,

**TFC made a donation of \$45,000.00 to SONZ.**



### ***Camps***

Camp Quality received a grant of **\$30,000.00**.

Crohn's and Colitis NZ's Camp Purple received a grant of **\$20,000.00** and TFC agreed to meet the remainder of Camp Purple's unrecoverable expenses as a result of Covid-19 cancellations with a payment of **\$8,250**.

### ***YSAR: Youth Search and Rescue***

Over this period TFC made a donation of **\$50,000.00** to the YSAR Trust, and pledged **another \$50,000.00** split over the next two years.





### 3. Education and Personal Development

#### *Freemasons Scholarships*

TFC funded a total of **\$196,000.00** to provide The Freemasons Charity University and Postgraduate Scholarships. These scholarships are yearly.

#### **Orakei Scholarship**

TFC funds yearly this **\$10,000.00** Postgraduate Scholarship awarded to a University of Auckland student of engineering or the natural or formal sciences.

#### **Powering Potential**

TFC has funded multiple years of **Powering Potential**, in 2021/22 TFC granted the programme **\$30,000.00**. The programme involves 4-day workshops, mentored by scientists for Year 12-13 science students who excel in the subject.



### 4. Supporting Innovative and Quality Medical Research

#### **Child Health (Paediatrics)**

The Freemasons Charity granted a total of **\$117,915.00** to support Child Health and Paediatric research. Through the University of Otago, TFC contributed towards student tuition fees and made donations to research programmes developing innovative studies in Paediatrics. (This total amount includes a Child Health fellowship and summer grant).

#### **Malaghan Institute Grant**

TFC has funded the CAR-T Cell Research Programme at Malaghan Institute.

In 2018 and 2019, **\$300,000** was donated each year.

In 2020 and 2021, **\$200,000** was donated. In 2022, a further **\$200,000** donation will be made.

#### **Chair of Neurosurgery at the Centre for Brain Research - University of Auckland**

TFC granted **\$100,000.00** for the Freemasons Foundation CBR Chair of Neurosurgery Endowment Fund.





## A year *in pictures*



Manawātū builders Jack Lord and Connor Deane receive the Freemasons Wilson Lewis Scholarship to build their careers.



Ross Moore, MNZM of Lodge Empire Fergusson No 225 received his 60-Year Service Bar in Wellington.



John Dobson was added to The Grand Lodge of New Zealand Roll of Honour.



Brian Martin of The Belmont Albion Lodge No 45 received his 50-Year Service Badge.



We began our special kind of support for the 2022 Special Olympics Summer Games.





*Lending a hand to our rural communities by supporting Rural Help Desk.*



*On Anzac Day we remembered those who served their country and made the ultimate sacrifice.*



*Our Annual Whiskey Tasting Night in Wellington raised \$50,000 for Big Buddy and Vincent's Art Workshop.*



*Grand Master Graham Wrigley made many official visits, including to The United Lodge of Wanganui.*



*The new Young Freemasons Group Wellington enjoys its first social get-together.*



*Introducing some of our new young members.*



*Supporting Youth Search and Rescue.*



## Financial Snapshot *1 July 2021-30 June 2022*

### Freemasons New Zealand and Building Fund Income

*This table breaks down Freemasons New Zealand and Building Fund Income as percentages.*

#### Freemasons New Zealand Income

Capitation	40%
Interest	8%
Commissions Heartland – Deposit Scheme	20%
Administration Services to Charities and Trust	14%
Advertising Magazine	2%
Other	1%
Subtotal	85%

#### Building Fund Income

Loan interest	4%
Bank interest	1%
Sale of Lodges	10%
Subtotal	15%
<b>Total</b>	<b>100%</b>



### Freemasons New Zealand and Building Fund Expenses

*Breaking down Freemasons New Zealand and Building Fund Expenses as percentages.*

Salaries/Recruitment/HR inc' fixed-term contractor fees (\$88k)	46%
Administration	16%
Communications – Marketing/ PR/Digital/Magazine	14%
GL Governance – GM/Board/Trustees, GL Officers	9%
Other	2%
Projects Website/Membership/BoardPro	12%
Building Fund Expenses	1%
<b>Total</b>	<b>100%</b>





**Freemasons New Zealand and Building Fund Assets**

*Breaking down Freemasons New Zealand and Building Fund Assets as percentages.*

Freemasons New Zealand Assets	
Bank	20%
Other	9%
Building Fund assets	
Bank	4%
Loans	51%
Masonic Building Shares	14%
Property	2%
Total	100%



*Our operating assets account for only 29% of all our assets while the Building Fund accounts for 71%. 85% of our income is generated from our operational activities with only 15% from the Building Fund.*



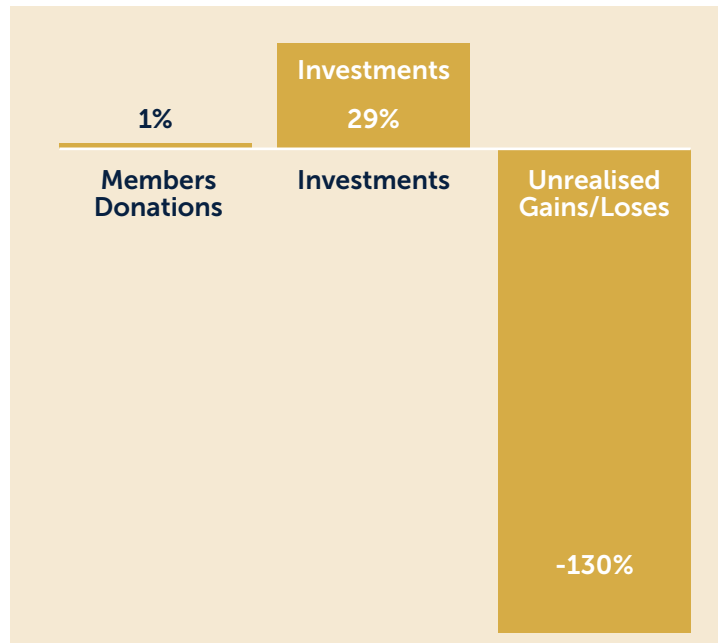


## The Freemasons Charity Income & Expenses

*This table breaks down The Freemasons Charity Income and Expenses as percentages.*

### The Freemasons Charity Income

Our long-term investment strategy matches our long-term aims.  
Our short-term returns may be negative, as shown here...



### The Freemasons Charity Expenses

Administration fee	6.7%
Investment Monitoring	13.2%
Unclaimed Imputation Credits	3.3%
SmartyGrants annual fees	0.7%
Other	1.1%
Governance/Training	0.2%
<b>Total</b>	<b>27.19%</b>

### The Freemasons Charity Grants

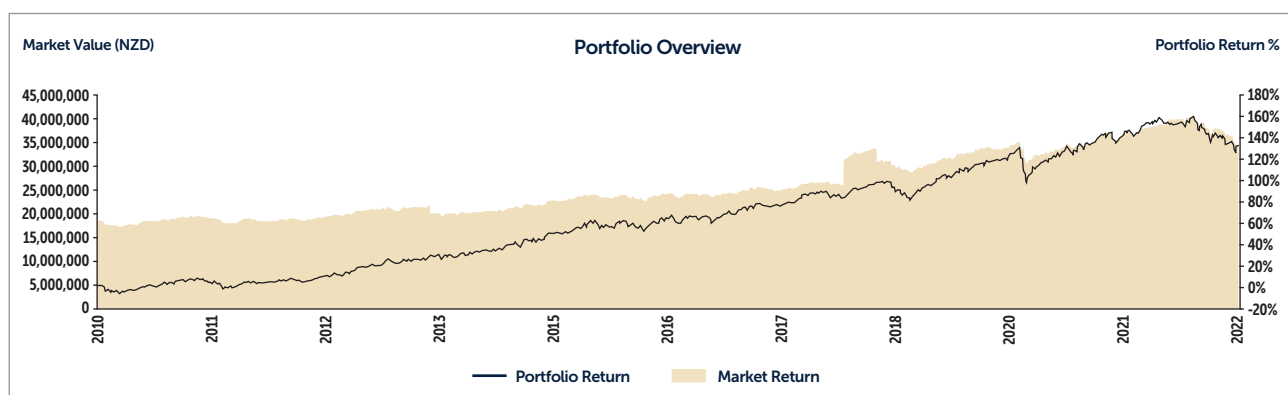
Grants	70.4%
Publicity	1.3%
Grant Scholarship Expenses	1.2%
<b>Total</b>	<b>72.9%</b>

*“Long-term investment strategy matches long-term aims. In some years short-term returns may be negative. However we see significant growth over the past 12 years, and double digit returns”*

JB Were

See SSP in Financials showing types of Grants # and \$

Breakdown of Lodge projects by division # and \$ showing contribution from Craft/Contribution from Lodges





## Northern Division Projects

Lodge Name	Organisation Supported
Lodge Copernicus No.505	The Waikato-Haurakai- Coromandel Rural Support Trust
Franklin Lodge No. 58	Kidz First Childrens Hospital
Lodge Matariki No. 476	Kidz First Childrens Hospital
Lodge Waiheke No.367	Food Bank
Mangere Lodge No. 330	Middlemore Hospital – Stroke Unit
Lodge Whitianga No. 443	Mercury Bay Community Trust
Lodge Whangarei No. 102	Northland Masonic Bowling Tournament
Wayfarers Lodge No. 389	Starship Children's Hospital
Wayfarers Lodge No. 389	Stroke Foundation
Wayfarers Lodge No. 389	Trees for Survival Trust
Wayfarers Lodge No. 389	Malaghan Institute - Freemasons CAR-T cell programme
Franklin Lodge No. 58	The Franklin Masonic Lodge Award
Onehunga Maungawhau Lodge No. 168	Auckland Business Chamber
Lodge of Enlightenment No. 502	The Clean Up Crew Aotearoa
The Lodge of the Liberal Arts No. 500	Auckland Youth Orchestra Incorporated
Lodge Rotorua No. 153	The Air Training Corps Association of New Zealand Incorporated
Lodge Whitianga No. 443	Mercury Bay Area School
The Sir Walter Scott Lodge No. 15	Heart Kids New Zealand Incorporated
The Sir Walter Scott Lodge No. 15	Thames Museum Society Incorporated
Mangere Lodge No. 330	South Auckland Emergency Housing
Lodge North Harbour No. 182	Red Cross AED Defibrillator
<b>Northern District Projects</b>	
Northern Division	The Waikato Tongan Community Charity Trust
Northland District No. 1	Kiwi Coast Trust
Counties-Hauraki District No. 5,	Papakura Marae Society Incorporated
Auckland District No. 2	Papakura Marae Society Incorporated

## Central Division Projects

The St. Andrew Kilwinning Lodge No. 79	Hospice Whanganui
The Manawatu Kilwinning Lodge No. 47	Freemasons Willson Lewis Scholarship Fund
The Herbert Teagle-Taia Lodge No. 300	Sailability Wellington Trust Incorporated
The Rawhiti Lodge No. 66	Guardian Angels
Herbert Teagle-Taia Lodge No. 300	Wellington Hospitals Foundation Trust
Lodge Otaihape No. 142	Taihape Health Ltd.
Lodge Haeata No. 272	Hawke's Bay Branch of the Institute of Registered Music Teachers
New Zealand Pacific Lodge No. 2	Downtown Community Ministry Wellington Inc
New Zealand Pacific Lodge No. 2	The Salvation Army New Zealand Trust
Lodge Te Puni No. 315	Te Omanga Hospice Foundation
Lodge Haeata No. 272	Nourished for Nil
Waihenga St Marks No. 37 (formerly St Johns)	Fareham Creative Space Trust
Lodge Rangitikei No. 38	Marton School
<b>Central District Projects</b>	
Kapiti-Wellington District No. 19,	Big Buddy Mentoring Trust
Hutt Wairarapa District No. 21	Big Buddy Mentoring Trust
Kapiti-Wellington District No. 19	Graeme Dingle Foundation Waikato
Kapiti-Wellington District No. 19	Vincent's Art Workshop Incorporated
Hutt Wairarapa District No. 21	Heart Kids New Zealand Incorporated
Eastland Ruahine District No. 17	The Cranford Hospice Trust

## Southern Division Projects

Lodge Aorangi Timaru No.196	Wayne Patrick Fine Arts
Waitohi Lodge No. 111	Marlborough Hospice Trust
Waitohi Lodge No. 111	Picton Heritage & Whaling Museum
The Caledonian Lodge No.16	The Ashley Lodge No. 28
The MacKenzie Lodge No. 93	Lake Ohau Ladies
The MacKenzie Lodge No. 93	The McKenzie Lodge Bursary
The MacKenzie Lodge No. 93	INOGEN Project
The Hercules Lodge No. 36	Hercules Lodge BMC Scholarship
Lodge Waverley No. 226	Alzheimers Otago
Havelock Lodge No. 104	Marlborough Youth Trust Inc.
Ngapara Lodge No.68	Waitaki District Health Services Ltd.
Robert Burns No. 50	Westport Yacht Club
The Crown Lodge No. 138	Young Womens Christian Association Christchurch Incorporated
The Ashley Lodge No. 28	Burwood Academy Trust
The United Lodge of Otago No. 448	Orokonui Ecosanctuary Limited
Lodge Awatere No. 292	Marlborough Group NZ Riding for the Disabled Association Incorporated
Canterbury Kilwinning Lodge No. 23	Red Cross AED Defibrillator
Unity Lodge No. 271	The Hornby Netball Club
The Hercules Lodge No. 36	The Priory In NZ of the Most Venerable Order of the Hospital of St John of Jerusalem
Unity Lodge No. 271	Christchurch Netball Centre
Unity Lodge No. 271	Otautahi Womens Refuge Incorporated
Unity Lodge No. 271	The Christchurch City Mission Foundation
Lodge Waverley No. 226	North Dunedin Shed Society Inc
Lodge Wanaka No. 277	Otago Rescue Helicopter Trust

## Extracts from the Financial Statements

Freemasons New Zealand  
 Consolidated Special Purpose Statement of  
 Financial Performance For Year Ended 30 June 2022

	2022	2021
	\$	\$
<b>Revenue</b>		
Brokerage Commission Received	220,774	232,819
Capitation Fees	447,896	453,347
Interest Received	141,402	328,186
Other Income	323,828	455,046
<b>Total Revenue</b>	<b>1,133,900</b>	<b>1,469,397</b>
<b>Expenses</b>		
Audit Fees	23,497	58,212
Bad Debts	(78,000)	111,708
Depreciation	14,101	11,027
Interest Paid	15,302	100,268
Other Administration Expenses	1,222,899	992,267
<b>Total Expenses</b>	<b>1,197,799</b>	<b>1,273,481</b>
<b>Operating surplus/(deficit) before tax</b>	<b>(63,899)</b>	<b>195,916</b>
<b>Taxation</b>		
<b>Surplus/(Deficit) for the year</b>	<b>(63,899)</b>	<b>195,916</b>
<b>The Surplus/(Deficit) has been allocated to the various reserves as follows:</b>		
General Fund	56,447	(3,007)
Freemasons Property	-	(20,235)
Building Fund	157,602	465,460
Communication Fund	(12,935)	2,227
Special Reserve Fund	(265,013)	(248,530)
	<b>(63,899)</b>	<b>(195,916)</b>

Signed for and on behalf of the Grand Lodge of Antient, Free & Accepted Masons of New Zealand who approve these financial statements for issue:



MW Bro G Wrigley, Grand Master



VW Bro M Cadman, Grand Treasurer

Date: 20th September 2022

The Financial Statements are available on the FNZ website <https://freemasonsnz.org/>





	2022	2021
	\$	\$
<b>Current Assets</b>		
Bank Accounts	2,741,782	4,879,088
Accounts Receivable and Prepayments	134,639	96,811
Taxation Receivable	23,407	17,936
Stock on Hand	16,588	21,731
Building Fund Loan to Lodges	–	54,829
<b>Total Revenue</b>	<b>2,916,416</b>	<b>5,070,394</b>
<b>Non Current Assets</b>		
Building Fund Loan to Lodges	2,737,781	2,852,714
Investments	1,591,748	1,591,748
Investment Property	265,000	265,000
Property, Plant & Equipment	142,415	151,694
Mortgage	3,000,000	3,000,000
<b>Total Non Current Assets</b>	<b>7,736,944</b>	<b>7,861,157</b>
<b>Total Assets</b>	<b>10,653,360</b>	<b>12,931,551</b>
<b>Current Liabilities</b>		
Accounts Payable	163,219	186,764
Employee Entitlements	39,318	26,808
Taxation Payable	–	–
Business Cards	5,826	1,666
Grand Master Relief Fund	19,999	19,868
Nelson Masonic Hall Fire Appeal	–	7,548
Loan from The Freemasons Charity	–	2,200,000
<b>Total Current Liabilities</b>	<b>228,362</b>	<b>2,442,654</b>
<b>Net Assets</b>	<b>10,424,998</b>	<b>10,488,897</b>
<b>Accumulated Funds</b>		
Accumulated Funds and reserves	10,488,897	10,292,981
Surplus for the year	(63,899)	195,916
<b>Total Accumulated funds</b>	<b>10,242,998</b>	<b>10,488,897</b>



**Description and Qualification of Outputs**

Outcomes	21/22	Amount	20/21	Amount
Child Health (Paediatrics)	4	\$112,915	3	\$141,989
Freemasons Scholarships	27	\$196,000	28	\$200,000
Grants Defibrilators	0	\$0	5	\$7,657
Grants Hospital Packs	1	\$3,009	1	\$3,704
Grants Individual/Critical	63	\$88,362	56	\$95,865
Lodge Projects, Camps & SONZ	80	\$418,025	89	\$266,435
Special Projects	4	\$142,470	9	\$143,381
YSAR	3	\$150,000	0	\$0
Malaghan Institute	1	\$200,000	2	\$245,000
Orakei Scholarship	1	\$10,000	1	\$10,000
<b>TOTAL</b>	<b>184</b>	<b>\$1,320,781</b>	<b>194</b>	<b>\$1,114,831</b>

**Additional Output Measures**

No delivery of major events in the current year (2021: \$Nil).

**Additional information**

The Freemasons Charity, for a number of years has been firmly committed to education and scientific research.

The Trust supports a large number of projects approved by the Trustees.

The Trustees accept applications to the Trust at any time of the year.

**Delivery of Major Events**

Scholarships were presented in May 2022 at various locations throughout New Zealand.

**Signed for and on behalf of the Trustees of The Freemasons Charity  
who approve these financial statements for issue:**



**VW Bro M Cadman, Grand Treasurer**



**RW Bro N Patrick, Chair Trustee**

Date: 20th September 2022

The Financial Statements are available on the FNZ website <https://freemasonsnz.org/>





	2022	2021
	\$	\$
<b>Revenue</b>		
Revenue from members	38,868	50,133
Interest, dividends and other investment revenue	983,929	933,903
Unrealised investment gain / (losses)	(4,474,986)	4,016,762
Other Revenue	—	4,915
<b>Total Revenue</b>	<b>(3,452,189)</b>	<b>5,005,714</b>
<b>Expenses</b>		
Provisions of goods or services	245,585	222,443
Grants and donations	1,320,782	1,114,831
Other expenses	308,945	275,616
<b>Total Expenses</b>	<b>1,875,312</b>	<b>1,612,890</b>
 Surplus for the year	 (5,327,501)	 3,392,823

	2022	2021
	\$	\$
<b>Current Assets</b>		
Bank and Cash	49,219	153,255
Investments	401,685	5,278,096
Stock		
Loans and Mortgages	241,174	2,461,194
<b>Total Current Assets</b>	<b>692,078</b>	<b>7,892,544</b>
<b>Non Current Assets</b>		
Investments	34,929,658	32,720,967
<b>Total Non Current Assets</b>	<b>34,929,658</b>	<b>32,720,967</b>
<b>Total Assets</b>	<b>35,621,736</b>	<b>40,613,511</b>
<b>Current Liabilities</b>		
Creditors and accruals	390,706	54,980
<b>Total Current Liabilities</b>	<b>390,706</b>	<b>54,980</b>
<b>Total Liabilities</b>	<b>390,706</b>	<b>54,980</b>
<b>Net Assets</b>	<b>35,231,030</b>	<b>40,558,531</b>
<b>Accumulated Funds</b>		
Accumulated Funds and reserves	40,558,531	37,165,708
Surplus for the year	(5,327,501)	3,392,823
<b>Total Accumulated funds</b>	<b>35,231,030</b>	<b>40,558,531</b>





## Helping us *make a difference in New Zealand*

---

*We'd like to acknowledge the many organisations that we work with to help make a difference to people, our communities and country.*



Grant Thornton





**FREEMASONS**  
New Zealand

[freemasonsnz.org](http://freemasonsnz.org)