

# Making a difference in New Zealand







## Contents

Who We Are	1
Review of Progress	5
Our Membership	7
Freemasons Financial Statements	8
The Year in Pictures	11
Freemasons Charity	15
Charity Financial Statements	20



## A Year of Progress and Unity

A message from our Grand Master, MWBro. Jim Watt

The ball is rolling and it's gaining momentum. If you ever have the honour of becoming Grand Master, you'll quickly learn how time flies. It only feels like yesterday that I assumed the responsibility of leading our Craft, and my first year is already drawing to a close.

I took on this responsibility, understanding the difficulties that lay ahead, with my main objective being the preservation of Freemasonry in New Zealand and the assurance of its future. Although not all of my proposed actions may be universally accepted, I urge our fellow members to broaden their perspective beyond their individual Lodges and contemplate how they can contribute to the betterment of Freemasonry in New Zealand.

Only by working as One Team can we preserve the values and traditions entrusted to us by our forefathers.

In my Grand Installation speech I highlighted several key projects that I would like to see advanced, and it is pleasing to see that in this first year we have made positive strides on all of these:

- The All of Governance Review, with the first steps in its implementation up for a vote at the upcoming Special Communication.
- Progress on the Masonic Operational Review will be reported back to members next year.

- The establishment of the New and Young Masons Forum, giving our younger members a greater voice.
- A thorough review of the Group Insurance Scheme to ensure it aligns with our needs.
- Development of a business sustainability model to secure our organisation's future.

Additionally, our One Team project, which commenced pre-COVID with Roadshows, is now back on track.

I extend my gratitude to RWBro. Pat Cooney, Deputy Grand Master, and his team for their dedication to the All of Governance Review, and to WBro. Cameron Smith and the Insurance Review team for their work on the Grand Lodge Insurance Scheme Review. Their efforts have been invaluable.

I especially want to acknowledge the contribution of our retiring Executive Director, Mark Cassidy, and thank him for all his work, and to thank the National Office team – Jacky, Debbie, Bianca, Rosalind and Duane.

I am excited with the progress we have made to date but even more excited about the transformative journey that still lies ahead.

MWBro. Jim Watt,  
Grand Master.

## Our Organisation

The Grand Lodge of New Zealand is an unincorporated Society trading under the name of Freemasons New Zealand. Its 4,882 brethren are members of 181 Lodges across New Zealand. Each Lodge operates under a charter issued by The Grand Lodge.

The assets of The Grand Lodge are held in trust by the Grand Lodge Trustees under an act of

Parliament. These assets include the proceeds from the sale of Lodges, held in the Masonic Building Fund, to be used for the acquiring and preserving of buildings or land.

The Grand Lodge has established a separate registered charity CC46016 with its own trust deed. It is known as The Freemasons Charity and is devoted solely to charity within New Zealand.

## A Brief History

Freemasonry was established officially when the first Grand Lodge was formed in 1717 in England. In reality, it is much older than that, dating back to late 13th-century stonemasons' guilds.

In 1842, Freemasonry came to New Zealand with Lodges from the English, Irish and Scottish Constitutions.

The Grand Lodge of New Zealand was formed in 1890. As of 30th June 2022, there are 181 Lodges in New Zealand, from Kaitia to the Bluff, with a total of 4,882 members.



## Our Structure and Governance

### Grand Master

Our ceremonial head is responsible for the overall administration of The Grand Lodge of New Zealand.

### Board of General Purposes

Eight appointed members look after The Grand Lodge of New Zealand (governance and policy) between triennial Grand Communications.

### Grand Lodge Trustees

Up to six members nominated by the Board of General Purposes and elected at the Grand Communication. They hold the assets of The Grand Lodge of New Zealand on behalf of its members, monitor investments and administer the Potter, Rankin and Lawson-Smith masonic charitable trusts.

### Audit & Risk Committee

An independent committee of the Board of General Purposes that oversees and advises on financial and other risks. They ensure that The Grand Lodge of New Zealand properly manages its risk and complies with its statutory obligations in New Zealand.

### The Freemasons Charity Management Committee

An independent committee, established under the Charitable Trust Deed, to administer and manage The Freemasons Charity. It oversees the prudent management of the Trust's investments. It is made up of the Deputy Grand Master, the Grand Almoner, two appointed members and one person seconded by the Board of General Purposes.





## Meet our Board

### Paul Chappel *President*



Paul is not only the Past District Grand Master for the Counties-Hauraki District, but he also brings a rich skill set from 27 years in the transport sector and owning a commercial buildings company.

His leadership spans 13 years with National Road Carriers, serving as Vice-President, President, and later Chairman of its parent group.

### Jim Watt *Grand Master*



Jim brings a broad range of skills gained from 40-plus years at the helm of his own event management and hospitality business. He also has a sound knowledge of our Ceremonial

Rules and the Book of Constitution.

### Pat Cooney *Deputy Grand Master*



After an extensive central and local government work history, Pat and his wife Carolyn successfully operated a retail business in Alexandra for 20 years. Pat also worked for eight years in a

chartered accountancy business before retiring in 2020. Governance experience includes: President of the Otago Southland Employers Association, Board member of the NZ Employers Federation, NZ Curling Association, NZ Rugby Referees Association, and a Catholic Parish Council, as well as local and regional sports club and Lodge roles.

### Noel King *Grand Registrar*



A fourth-generation NZ Freemason, Noel is a Past Master of Mangere Lodge 330 (2004) and a foundation member of Lodge Kauri 474 and Lodge Matariki 476. He is a director of investigations and

security companies and a member of the NZ Security Association. Noel qualified with a BBS in accounting and an LLB as a lawyer. He has practised law as a barrister.

### Mike Cadman *Grand Treasurer*



Mike has extensive experience in senior management roles as a Director, General Manager/ Managing Director and Chief Financial Officer. His experience includes management accounting,

internal control and audit, systems review and implementation, HR, inventory management, health and safety, and strategic and business planning.

### David Piper *Board Appointee Northern*



A Freemason since 2005, David has held several positions, including four terms as Master of Lodge Herne Bay United. A District Grand Master for Auckland from 2019-2022, he was appointed to the

Board as the Northern Appointee in November 2022. He has worked in human resources for over 25 years and has led the HR function at Bridgestone NZ for the last 10 years, and his people and change management skills have greatly assisted the Board.

### Warwick Bell *Board Appointee Central*



Warwick is a registered architect and company director. He has extensive Board governance and strategic leadership experience, including NZQA, NZ Industry Training Federation and as Chair of

the NZ Registered Architects Board, and Trustees NZ Scout Youth Foundation. A Freemason since 1989, Warwick is a Past District Grand Master and has held other appointments.

### Michael Wooding *Board Appointee Southern*



Michael Wooding is the Southern Division Representative to the Board of General Purposes. Initiated into Freemasonry in 2003, Michael is a member of The Avon Shirley Lodge No. 185

in Christchurch and The Havelock Lodge No. 104 in Blenheim. He is a Past District Grand Master and lives and works in Canterbury as an Air Traffic Controller. He is married to Lesley, and they have two children, Tom and Bronte.

### Mark Cassidy *Executive Director*



Originally from the UK, where he was a lawyer, Mark has held senior positions at Public Trust, Wellington Community Trust, Mary Potter Hospice, and the Port Nicholson Rotary Club.

He is interested in self-development, building relationships, and helping others. These are qualities that he brings to his role as Executive Director. He has signalled to the Board that in November 2023 he will be retiring from the position, which he has held since November 2019.

## Grand Lodge Trustees

RWBro. Neville Patrick (Chair)  
 MWBro. Graham Wrigley  
 RWBro. Eddie Eeles  
 RWBro. Steve Salmon  
 VWBro. Don Seath

## Audit and Risk Committee

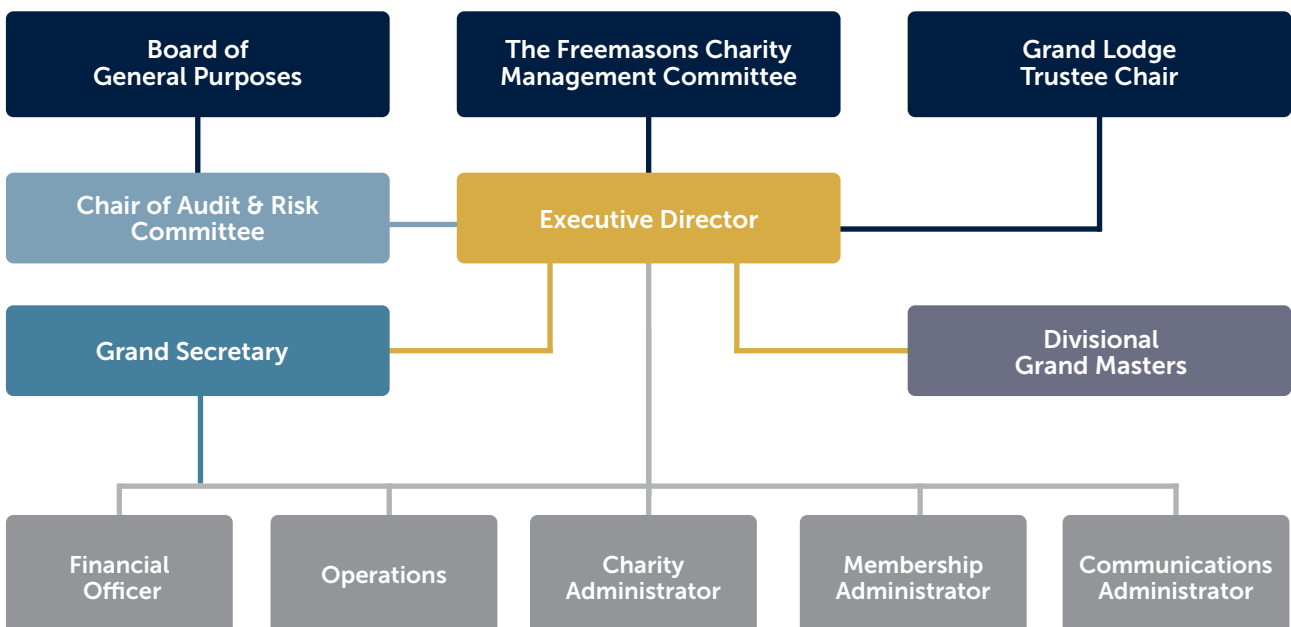
VWBro. Mike Cadman (Chair)  
 RWBro. Pat Cooney  
 VWBro. Noel King  
 VWBro. Darren Shadbolt  
 VWBro. Michael Wooding  
 Mark Cassidy (Executive Director in attendance)

## The Freemasons Charity Management Committee (TFCMC)

RWBro. Pat Cooney (Chair)  
 VWBro. Jeff Mear  
 WBro. Nick Langley  
 WBro. Craig Ancell  
 Amanda Chappel (Independent Member)



## Operational *National Office Organisational Chart* (as of 30th June 2023)





## National Office

---

The Executive Director and team of five provide Membership Services, including Lodge, membership and administration support.

They provide support to The Freemasons Charity and Charitable Trusts.

Our National Office promotes Freemasonry through our channels including our Website, Social Media and quarterly Magazine.

The National Office also works with external specialists to deliver our Strategic Plan and key projects.



*Duane, Debbie, Jacky, Rosalind, Bianca and Mark.*

## Our Vision

To add value to society by supporting good men, their families and their communities.

The principal aim of Freemasonry is the promotion of universal and lasting happiness of all people.

## Our Principles

Freemasonry is founded upon the principles of tolerance and acceptance, care, kindness, honesty and trust.

For every man who aspires to be a better person, Freemasonry helps you develop the knowledge and skills to be the best you can be – through a unique mix of ceremony, fresh thinking and good works in an enjoyable and supportive environment, because only Freemasonry uses long-proven principles that empower you to unlock your full potential, for a better future.





## Review of Progress *in the First Year* Report from the President

This year, the Board of General Purposes has embarked on a mission to improve efficiency, working tirelessly on initiatives that will significantly impact on the future of our organisation. Every step taken has been guided by the vision to create a brighter and more sustainable future for Freemasons New Zealand.

The Board is committed to delivering the vision and focus for our organisation outlined by the Grand Master at the Grand Installation in November 2022. There are challenges facing the organisation that cannot be ignored, but with every challenge there is opportunity.

It has been the Board's role to seek these out; reducing costs whilst driving greater efficiencies and more effective systems and processes, addressing engagement of brethren across the country through improved communication and providing value through offerings to our members and the Lodges that meet the challenges they face.

### Our Primary Goals and Aspirations for the Year Ahead:

#### Elevating Efficiency and Service

Foremost among our objectives is achieving 'financial efficiency' for Freemasons NZ. We are determined to reduce costs while upholding our commitment to providing exceptional service

to our members and the charitable causes we support. This requires a careful balance. We have examined our expenditure line by line and where possible we have made cost reductions through bringing work 'in-house' and moving to less expensive virtual communication channels.

#### Revitalising Systems and Processes

To better serve our members, we are revisiting our systems and processes, to enhance our membership database and overall user experience.

The Board has approved replacing our current database subject to due diligence. Our Technology Working Group is at the heart of this mission, steering Freemasons New Zealand towards a future with better outcomes for every member.





## Tailored Insurance Solutions

Recognising the diverse needs of our Lodges, we've undertaken an in-depth review of our insurance offerings. The Grand Lodge Group Insurance Scheme worked well for many years but due to changing market conditions and the diversity and condition of our buildings it was no longer fit for purpose. Our aim is to curate more bespoke solutions that mirror each Lodge's unique needs and circumstances. We have started that journey and over the next 12 months we will be looking to establish frameworks to assist lodges that request support with management of their buildings, whether it be maintenance or rental issues.

## Strengthening Communication

Maintaining good relationships with Lodges is paramount. Thus we're focusing, not just on communication, but on fostering a deep-seated connection that builds trust. Our goal is to keep every member abreast of crucial decisions, maintaining an environment of trust, clarity, and understanding. The Board is committed to regular communication with our members.

## Forward-Thinking Initiatives

We believe in embracing evolution. While not every initiative might resonate with every member, it's important to remember that each decision is taken to navigate challenges and elevate Freemasons New Zealand to greater heights. The introduction of the Nomination and Remuneration Committee, to assist with appointing talent within our organisations to governance and management positions, is one such example.

## Celebrating New Leadership

With immense pleasure, we welcome Bro. Andrew Cowie as our new Executive Director. Handpicked for his leadership and management experience, Andrew is a Master Mason residing in Wellington and is looking forward to being part of the Management structure going forward.

## A Salute to Past Contributions

Our gratitude to Mark Cassidy, our outgoing Executive Director, is boundless. With initiatives such as the One Team programme, updating of our management systems such as Xero, SmartyGrants and Board Pro, and the Freemasons documentary, he's left an indelible mark. We thank him for his unwavering commitment and wish him all the best for his future endeavours.

In summary, the Board is more committed than

ever to focusing on improved assistance to Lodges, reducing costs and improving communication channels.

I wish to thank the members of the Board, Trustees and all who have committed their time to making Freemasons New Zealand a better place.



RWBro. Paul Chappel, President.



## Freemasons NZ Social Media

Facebook	24,552 followers
Instagram	2,941 followers
Twitter	1,442 followers
LinkedIn	1,804 followers
YouTube FMNZ Channel	635 followers
TikTok	5,410 followers

Our TikTok channel is run by a masonic third party on behalf of Freemasons NZ, and belongs to a world-wide Freemasons group with 1.12 million followers.

## freemasonsnz.org Website

Users	6,200 (77.42% are from New Zealand)
New Users	5,400
Sessions	8,916
Page views	38,2830

(13 pages per session with an average session duration of 2 minutes).



## We're attracting *more members*

### Our membership at a glance

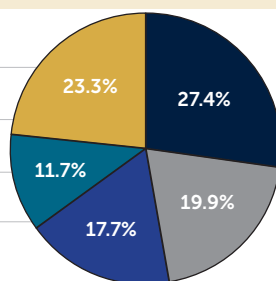
Although our total membership continues to decline this trend is slowing down and starting to plateau. We received more enquiries from potential members and initiated more brethren, up by 33% and 53% respectively from last year. By far the largest number of new initiates are under the age of 40 years with a significant proportion under 30 years.

#### Membership

2022/23	2021/22	Change
4885	5134	-254 (-5.2%)

#### Age breakdown of Members

27.4 %	Under 50 years
19.9%	50-64
17.7%	65-74
11.7%	75-79
23.3%	80+



#### Enquiries received through National Office to join 480 ↑

Initiates	Transfers	Total	Resignations	Deaths	Total
233 ↑	25 ↓	258 ↑	366 ↑	146 ↓	512 →

#### Age breakdown of New Initiates

3.8%	Over 60 years
29.5%	51-60 years
7.2 %	41-50 years
59.5 %	Under the age of 40 years. 20% of those are 30 or under

#### Age Breakdown of Resignations

19.8	80+ years
10.1%	75-79 years
16%	65-74 years
21.9%	50-64 years
32.2%	Under 50 years

#### Age Breakdown of deaths

76.7%	80+ years
10.3%	75-79 years
7.5%	65-74 years
4.1%	50-64 years
1.4%	Under 50 years

#### Lodges

2022/23	2021/22	Change
181	193	12 Lodges (-5.5%)





## Financial Snapshots *for Freemasons New Zealand*

### Financial Snapshot for the year ended 30 June 2023

<b>Income</b>	<b>General Fund</b>	<b>Building Fund</b>	<b>Total</b>
Capitation Fees	19%	0%	19%
Interest Received	5%	16%	21%
Commissions Heartland Deposit Scheme	12%	0%	12%
Administration Services to Charities and Trust	15%	0%	15%
Proceeds from sale of lodge buildings	0%	9%	9%
Insurance Scheme recharges	14%	0%	14%
Grand Communication (Registration/Sponsorship/ Advertising	5%	0%	5%
Other (Including Magazine Advertising)	5%	0%	5%
<b>Total Freemasons New Zealand Income</b>	<b>75%</b>	<b>25%</b>	<b>100%</b>

<b>Expenses</b>			
Employee / contractor costs	32%	0%	32%
Administration, IT and other costs	12%	0%	12%
Communications - Marketing / PR / Digital / Magazine	8%	0%	8%
GL Governance - GM / Board / Trustees/GL Officers	6%	0%	6%
Grand Communication	15%	0%	15%
Insurance Scheme costs	18%	0%	18%
Projects (including All of Governance and IT)	3%	0%	3%
Building Fund Expenses	0%	6%	6%
<b>Total</b>	<b>94%</b>	<b>6%</b>	<b>100%</b>

<b>Net Assets</b>	<b>General Fund</b>	<b>Building Fund</b>	<b>Total</b>
Bank	26%	2%	28%
Net current Assets	2%	0%	2%
Building Fund Investments (Including loans etc)	0%	70%	70%
<b>Total</b>	<b>28%</b>	<b>72%</b>	<b>100%</b>

### Commentary

#### The General Fund

Key sources of income are capitation fees, commissions from Heartland Bank deposit scheme and charging for administration services performed for various masonic charities and trusts.

Main costs are National Office staff, administration costs (including rent, national office costs and general insurance) communications and governance costs. The GL Insurance Scheme costs were recharged to lodges.

Current year operating loss was due to the Grand Communications costs exceeding the sponsorship and advertising revenue the event generated.

Operating assets are predominantly in bank balances and deposits.

## The Building Fund

It charges interest on loans and benefited in the current year from the sale of a lodge building.

Current years gains have been driven by the sale of a lodge building and the recognition of interest on loans.

Investments are in long term investments and loans and shares held in lodge buildings.



**FREEMASONS**  
New Zealand

## Summary from the Financial Statements Freemasons New Zealand Consolidated Special Purpose Statement of Financial Performance For Year Ended 30 June 2023

	2023 General Fund \$	2023 Building Fund \$	2023 Total \$	2022 General Fund \$	2022 Building Fund \$	2022 Total \$
<b>Revenue</b>						
Brokerage Commission Received	271,792	–	271,792	220,774	–	220,774
Capitation Fees	448,403	–	448,403	447,896	–	447,896
Interest Received	110,323	381,755	492,078	89,368	52,034	141,402
Proceeds from sale of lodge	–	208,247	208,247	–	117,493	117,493
Other Income	889,892	–	889,892	206,335	–	206,355
<b>Total Revenue</b>	<b>1,730,410</b>	<b>590,002</b>	<b>2,320,412</b>	<b>964,373</b>	<b>169,527</b>	<b>1,133,900</b>
<b>Expenses</b>						
Audit Fees	29,778	–	29,778	23,495	–	23,495
Bad Debts	–	–	–	(78,000)	–	(78,000)
Depreciation	11,919	–	11,919	14,101	–	14,101
Interest Paid	–	–	–	15,302	–	15,302
Other Administrative Expenses	1,682,643	106,998	1,789,641	1,210,975	–	1,222,901
<b>Total Expenses</b>	<b>1,724,340</b>	<b>106,998</b>	<b>1,831,338</b>	<b>1,185,873</b>	<b>11,926</b>	<b>1,197,799</b>
<b>Operating surplus/ (deficit) before Tax</b>	<b>6,070</b>	<b>483,004</b>	<b>489,074</b>	<b>(221,500)</b>	<b>157,601</b>	<b>(63,899)</b>
Taxation	(49,174)	–	(49,174)	–	–	–
<b>Surplus/(deficit) for the year</b>	<b>(43,104)</b>	<b>483,004</b>	<b>439,900</b>	<b>(221,500)</b>	<b>157,601</b>	<b>(63,899)</b>





	2023	2022
	\$	\$
<b>Current Assets</b>		
Bank Accounts	2,953,441	2,741,782
Accounts Receivable and Prepayments	437,171	134,639
Taxation Receivable	–	23,407
Stock on Hand	21,766	16,588
<b>Total Current Assets</b>	<b>3,412,378</b>	<b>2,916,416</b>
<b>Non Current Assets</b>		
Building Fund Loan to Lodges	2,656,174	2,737,781
Investments	1,591,748	1,591,748
Investment Property	265,000	265,000
Property, Plant & Equipment	132,451	142,415
Mortgage	3,000,810	3,000,000
<b>Total Non Current Assets</b>	<b>7,646,183</b>	<b>7,736,944</b>
<b>Total Assets</b>	<b>11,058,561</b>	<b>10,653,360</b>
<b>Current Liabilities</b>		
Accounts Payable	120,308	163,219
Employee Entitlements	38,835	39,318
Taxation Payable	28,839	–
Business Cards	5,682	5,826
Grand Master Relief Fund	–	19,999
<b>Total Current Liabilities</b>	<b>193,664</b>	<b>228,362</b>
<b>Net Assets</b>	<b>10,864,898</b>	<b>10,424,998</b>
<b>Accumulated Funds</b>		
Accumulated Funds and reserves	10,424,998	10,488,897
Surplus for the year	439,900	(63,899)
<b>Total Accumulated funds</b>	<b>10,864,898</b>	<b>10,424,998</b>

Signed for and on behalf of the Grand Lodge of Antient, Free & Accepted Masons of New Zealand who approve these Financial statements for issue:

MWBro. J Watt, Grand Master  
Date: 25th October 2023

VWBro. M Cadman, Grand Treasurer

## A year *in pictures*



With our support, Western Bay Museum's new exhibit spearheaded by Matauranga Māori Lead, Hone Winder-Murray, aims to enrich our understanding of New Zealand's intricate history.



Celebrating Lodge Rangitāne No. 369: Their philanthropic drive aids Scouting traditions at Camp Kilsby, promoting community spirit.



Woburn Care Home Facility: The opening of the state-of-the-art Woburn Masonic home - a testament to Freemasonry's lasting commitment to community welfare.



Partners Function Elegance and Entertainment: At the 2022 Grand Installation, partners indulge in a sophisticated evening of casino games and wine tasting.





*Our yearly donation ensures 500 Youth Search and Rescue students across NZ remain connected and safe during their off-track bush training.*



*Boosting Communication: Freemasons' support in refurbishing the vital repeater atop the Kaimai ranges; an asset for various groups, ensuring their safety.*



*New & Young Freemasons Forum: A new era of Freemasonry emerges for the younger generation. From pub socials to group meetings, their enthusiasm is infectious.*



*Empowering Tomorrow: With our contribution in the Ruapehu District, we nurture the future tech leaders and innovators, paving their path in the VEX Robotics competition.*



*SONZ National Summer Games Cheer and Spirit: Penny and Jim, immersed in the thrill of the first day of the Freemasons Special Olympics National Summer Games.*





Meet Grand Master Jim Watt:  
A glimpse into the regal  
beginnings of his journey.



New & Young Freemasons Forum Voices of Tomorrow: A new era of Freemasonry emerges  
as GM Jim Watt and team initiate a platform for the younger generation. From pub socials to  
group meetings, their enthusiasm is infectious.



Lodge Calliope Centenary, 100 Years of Brotherhood: Lodge Calliope in Apia, Samoa celebrates a century of unity and  
fraternity under the New Zealand constitution







*Scholarship Winners Shining Stars of 2023: Our scholarship recipients from the southern and central divisions celebrating their achievements alongside Grand Master Jim Watt.*



*Athlete turned Freemason Hamish Taverner: From a SONZ athlete to a Freemason.*



*Changing of our Leadership Team Passing the Baton: An intimate moment as past leaders welcome the new leadership team before the Grand Installation in 2022.*



*Grassroots Community Work. From the playful grounds of Play and Learn on King Street to the heartwarming environment of Te Puna Ora o Totara, the Counties Hauraki Vegepod project, backed by Freemasons, sews seeds of knowledge and unity across generations.*



### The Freemasons Charity 2022-23

Report from the Chair of The Freemasons Charity Management Committee.

The 2022-23 financial year was marked by changes in leadership and continuing support for charitable initiatives that align with our strategic priorities. Here are the key highlights:

#### Leadership Transitions

Following the November 2022 Grand Installation when MW.Bro Jim Watt assumed the esteemed position of Grand Master of Freemasons New Zealand, he stepped aside from the role of Chair of The Freemasons Charity Management Committee. The incoming Deputy Grand Master took over as Chair. We would like to acknowledge the work of VWBro. Bob Monson as Grand Almoner who also retired in November. VWBro. Jeff Mear took over the role and brings with him the experience gained from serving as a member on The Freemasons Charity Management Committee.

The Trustees of Grand Lodge were also appointed at the Grand Communication preceding the 2022 Grand Installation.

Notable additions to the Trustees of Grand Lodge and, consequently, Trustees of The Freemasons Charity, included MWBro. Graham Wrigley PGM and VWBro. Don Seath P Dist GM.





## National-Level Charitable Endeavours

Throughout the 2022-23 financial year, we maintained our steadfast commitment to supporting various national-level charitable initiatives. These included:

- Continued support for CAR-T Cell cancer research conducted by the Malaghan Institute of Medical Research.
- Sponsorship of the 'Powering Potential' programme, benefiting senior secondary school students, in collaboration with The Royal Society of New Zealand.
- Ongoing backing for the 'Camp Purple' programme, a vital initiative by Crohn's & Colitis New Zealand.
- Sustained funding for Freemasons University Scholarships, a tradition extending over 45 years.
- Nurturing young talent through Child Health Fellowships in partnership with the University of Otago, spanning over three decades.
- Support for the Centre for Brain Research at the University of Auckland.
- Empowering Youth Search & Rescue initiatives.

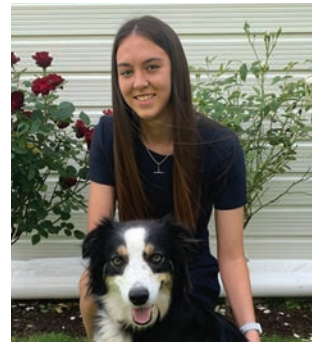
## Community Support Initiatives

Local Lodges and Districts continued to demonstrate robust support for community projects. These initiatives often involved local fundraising, supplemented by subsidy support from The Freemasons Charity. During lockdown periods, we swiftly responded to the immediate needs of families through Critical Needs Grants, providing essential assistance in the form of food and fuel vouchers.

Early in 2023, Cyclone Gabrielle wreaked havoc in parts of the North Island, leading to another surge in demand for support. The Freemasons Charity played a vital role in providing relief and helping Lodges and Districts restore community assets damaged by the Cyclone.

## Freemasons University Scholarships

In response to the challenges posed by the pandemic, the presentation of Freemasons University Scholarships in 2022 and 2023 was conducted at the Divisional level. This approach was made possible through the support of Divisional Grand Masters, their teams, and local brethren, who helped create memorable presentation events for scholarship recipients and their families. Plans are already underway to return to a national presentation event in Wellington for the 2024 scholarships.



*Just a few of this years recipients of Freemason Scholarships*

## Grand Master's Cyclone Relief Appeal

Notably, brethren and Lodges across New Zealand wholeheartedly embraced the Grand Master's Cyclone Relief Appeal. The funds received are earmarked for a park redevelopment project in a severely affected area of the Napier District.





## Special Olympics New Zealand Participation

A noteworthy development was our involvement in the 2021 Freemasons Special Olympics National Summer Games, which, due to COVID-19, were rescheduled to December 2022.

This engagement marked a significant milestone, with The Freemasons Charity contributing as both a funder and a source of dedicated Freemason volunteers. These volunteers played crucial roles in various stages, including pre-event preparations, to ensure the success of the Games. Heartfelt gratitude goes out to all Lodges and brethren whose financial and volunteer support made this endeavour a triumph.



RWBro. Pat Cooney,  
The Chair of The Freemasons  
Charity Management Committee.

## 1. Benevolence and Almoning

### Individual & Critical Needs Grants

TFC assisted 53 individuals by providing funding of \$63,488.00 through Critical Needs grants, and a further \$19,154.00 with 5 Individual Assistance grants **totalling \$82,642.00**

### Hospital Packs Granted

TFC granted **\$5,370** for Hospital Packs for patients staying in hospital.



## 2. Enhancing Our Communities

### Lodge & District Projects

TFC supports local Lodge & District community projects by matching funds raised by the Lodge. A District project may qualify for 2:1 funding from TFC.

**Over this period the Lodges supported 86 local and District community projects and raised \$263,804.**

**TFC funded \$284,498 towards Lodge & District Projects through matched funding.**

**The scheme in total funded \$548,302 to charitable and not-for-profit organisations to support local communities throughout New Zealand.**

### Over the 2021/22 period...

Northern Division initiated 29 Lodge/District Projects and raised and contributed \$75,411.

**TFC funded \$98,435.**

Central Division initiated 35 Lodge/District Projects and raised and contributed \$73,189.

**TFC funded \$92,784.**



Southern Division initiated 22 Lodge/District Projects and raised and contributed \$115,204.

**TFC funded \$94,636.**

Community-based projects benefited, including providing assistance to local Canterbury West Coast Air Rescue Trust for the purchase of rescue equipment. National organisations to benefit included Special Olympics New Zealand which held its National Summer Games in Hamilton and Camp Quality for children living with cancer.



### **Camp Purple - Crohn's & Colitis NZ**

TFC made a grant of **\$20,000**.

To support young people living with Crohn's and Colitis attending the camp.

### **Special Projects**

Additional projects include an extra **\$41,000** for nine District Projects and a donation of **\$10,000** to Key of Life Charitable Trust, "I am Hope" providing mental health counselling for youth.

## **3. Education and Personal Development**

### **Freemasons Scholarships**

TFC funded a total of **\$208,000** to provide The Freemasons Charity University and Postgraduate Scholarships to 27 students attending university in New Zealand. These scholarships are annual.

### **Orakei Scholarship**

Every year TFC funds this **\$10,000 Postgraduate Scholarship** awarded to a University of Auckland student of engineering or the natural or formal sciences.

### **Powering Potential – The Royal Society of New Zealand**

The Freemasons Charity has for a number of years funded Powering Potential.

In 2022/23 TFC granted the programme **\$35,000.00**.

The programme involves four-day workshops, mentored by scientists for Year 12-13 science students who excel in the subject.

**TFC has committed to continue funding this programme with a grant of \$35,000 in 2023/24 and a further \$35,000 in 2024/25.**

### **YSAR TRUST**

The Freemasons Charity entered into a Memorandum of understanding to support YSAR (Youth Search and Rescue) Trust to help support the training of young people and other community members through Search and Rescue and Emergency Management Programmes in the skills required to save the lives of lost and injured people.

**The Funding was for \$100,00 of which \$50,000 was paid in 2021/22 and a further \$50,000 was committed.**

**\$25,000 was paid in 2022/23 and the balance of \$25,000 is to be paid in 2023/24**



2023 Orakei Scholarship recipient  
Janneke Grundemann





### ***Apprentice Support Grant Scheme***

An Apprentice Support Grant Scheme was approved in the current financial year and **\$30,000** was allocated to support the scheme in 2023/24.

The scheme is currently being developed.

### ***Registered Nurse Scholarships - The Masonic Villages Trust***

The Freemasons Charity has committed to supporting The Masonic Villages Trust to undertake a trial to train rest home nurses to achieve qualifications and agreed to allocate up to **\$50,000.00** to support this in 2023/24.

A sum of **\$30,000** has been accrued in 2022/23 financial statements.



## **4. Supporting Innovative and Quality Medical Research**

### ***Child Health (Paediatrics)***

The Freemasons Charity granted a total of **\$143,334.97** to support Child Health and Paediatric research. Through the University of Otago, the charity contributed towards student tuition fees and made donations to research programmes developing innovative studies in Paediatrics. (This total amount includes a Child Health Fellowship and summer grant).

### ***Malaghan Institute Grant – CAR-T-Cell Research Programme***

The Freemasons Charity has been a long-time supporter of this research and agreed in 2020 to fund **\$200,000 each year for 3 years**. In 2022/23 the final instalment of **\$200,000 was paid**.

The charity proposes to continue funding **\$200,000 each year** to support the research for a further 3 years from 2023/24 through to 2025/26.



***The 2022-23 financial year exemplified our enduring commitment to charity, fostering positive change and enriching lives across New Zealand.***



## Financial Snapshots

### Income

Bequests and Donations	10%
Unclaimed Imputation Credits	26%
SmartyGrants annual fees	64%
<b>Total Income &amp; Expenses</b>	<b>100%</b>

### Expenses & Grants

Grants and Donations	60%
Grant & Scholarship expenses	7%
Publicity	1%
Investment Monitoring (including unclaimable Imputation credits)	17%
Administration Fee	13%
Other	2%
<b>Total Expenses &amp; Grants</b>	<b>100%</b>

## Commentary

Unrealised investment gains have bounced back from the investment losses experienced in the previous year. This reflects the long-term investment strategy which matches our long-term charitable objectives. Grants, Donations and related expenses account for 68% of The Freemasons Charity's expenditure. Investment monitoring (including imputation credits not claimed) represents 17% of the expenses and generate the investment income (realised and unrealised gains and losses). The administration fee relates to administration services provided by Freemasons New Zealand National Office.

## Northern Division Projects

Lodge Name	Organisation Supported
Manukau Westmere Lodge No. 24	Kowhai Intermediate School
The Franklin Lodge No. 58	Waiuku College
The Franklin Lodge 58	Pukekohe High School
Titirangi Mt Albert Lodge No. 204	Waitakere College Inclusion Support Centre
Lodge Orewa No. 370	The Green Room Rhythm of Youth Charitable Trust
The Onehunga Lodge No. 168	Orakei Sea Scouts
Lodge Howick No. 314	The Upside Downs Education Trust
Lodge North Harbour No. 182	North Shore Model Railway Club Incorporated
The Mangere Lodge No. 330	Papakura Franklin Blue Light C/O Papakura Police Station
Lodge Waikato No. 475	CAB, Citizens Advice Bureau (Vickey Haden Jones)
Lodge Kerikeri No. 402	2 Orgs Whangarei and The Bay of Islands Special Olympics Clubs
Lodge Waitomo No. 469	Game On Charitable Trust
Lodge Copernicus No. 505	Hamilton City Brass Band, Hamilton
Lodge Whitanga No. 443	Mercury Bay Environmental Trust
The Taupiri Lodge No. 118	The TeKauwhata Fire Brigade
Lodge Rotorua No. 153	The Air Training Corps Association of New Zealand Incorporated
The Onehunga Lodge No. 168	Onehunga High School
Lodge Copernicus No. 505	Waikato, Hauraki/Coromandel Rural Support Trust
The Tauranga Lodge No. 125	Breast Cancer Support Services Tauranga Trust
Lodge Matariki No. 476	South Auckland Group Riding For The Disabled Association Incorporated

### Northern District Projects

Counties-Hauraki District No. 5	Counties Hauraki District No. 5
Counties-Hauraki District No. 5	Akanesi Mataitonga Trust
Auckland District No. 2	Camp Quality New Zealand
Counties-Hauraki District No. 5	Rapid Relief Team (RRT) NZ Limited
Waikato District No. 6	Waikato District Almoners (under Pukemiro Lodge)
Bay of Plenty District No. 7	Pinoy Tauranga Basketball
Northland District No. 1	Kiwi Coast Trust
Auckland District No. 2	North Shore Masonic Centre

## Central Division Projects

<b>Lodge Name</b>	<b>Organisation Supported</b>
Lodge Rangitikei No.38	Marton School
The Manawatu Kilwinning Lodge No. 47	Green Corridors
Lodge Haeata No. 272	Institute of Registered Music Teachers of New Zealand
Lodge Abercorn Tuahine No. 76	Gisborne Caravan and Camping Club
Lodge Otaihape No. 142	Taihape Volunteer Fire Brigade
The Coronation Lodge No. 127	Orange Sky New Zealand Limited
Lodge Zetland No. 312	Shetland Society of Wellington
Trentham Lodge No. 262	Cancer Society of New Zealand Wellington Division Incorporated
The Manawatu Kilwinning Lodge No. 47	Freemasons Willson Lewis Scholarship
United Lodge of Masterton No. 19	NZ Family And Foster Care Federation Incorporated
Te Awahou Lodge No. 133	Foxton Beach Community Centre
Scinde Lodge No. 5	Greendale Tamatea Scout Group
New Zealand Pacific Lodge No. 2	Wellington College
Lodge Rangitane No. 369	Piping Pink
The Eketahuna Lodge No. 92	Rural Support Trust
The Rawhiti Lodge No. 66	Tararua District Council Mayoral Flood Relief Fund
Lodge Whangamomona No. 234	Stratford High School
The Woburn Lodge No. 25	Mayoral Relief Fund Central Hawke's Bay
The Coronation Lodge No. 127	The Mary Potter Hospice Foundation
Lodge Mana No. 352	Porirua Womens Refuge
Lodge Waikanae No. 433	Kapiti Youth Employment Foundation
Empire Fergusson Lodge No. 225	Vincent's Art Workshop Incorporated
The Baden Powell Lodge No. 381	The Scout Association of New Zealand
Lodge Whangamomona No. 234	Elizabeth R Lifecare & Village

### Central District Projects

Eastland Ruahine District No. 17	Royal New Zealand Foundation Of The Blind Incorporated
Hutt Wairarapa District No. 21	Parent To Parent New Zealand Incorporated
Ruapehu District No. 15	Rangitikei College
Kapiti-Wellington District No. 19	Graeme Dingle Foundation Waikato
Hutt Wairarapa District No. 21	Upper Hutt Women's Centre Incorporated
Kapiti-Wellington District No. 19	Special Olympics Kapiti Trust
Hutt Wairarapa District No. 21	Special Olympics Hutt Valley Trust
Eastland Ruahine District No. 17	Hawke's Bay Disaster Relief Trust
Eastland Ruahine District No. 17	Tairāwhiti Disaster Relief Fund
Eastland Ruahine District No. 17	Nourished For Nil Limited
Kapiti-Wellington District No. 19	Younger Onset Dementia Aotearoa Trust

## Southern Division Projects

<b>Lodge Name</b>	<b>Organisation Supported</b>
Lodge St John No.84	Taieri Community Facilities Trust
Robert Burns Lodge No.50	Westport Yacht Club
Lodge Takahe No. 397	Halswell Netball Club
The Ashley Lodge No. 28	Kiwi Family Trust
Lodge Eckford No. 334	Blenheim Menz Shed
Lodge Manuhierikia Kilwinning No. 109	Grace Moir
The Lodge of Remembrance No. 318	Southland Multiple Sclerosis and Parkinson's Society
The Crown Lodge No. 138	Gilberthorpe School
Lodge Oamaru Kilwinning No. 82	Otago Neighbourhood Support Charitable Trust
Lodge of Progress No. 22	Christchurch New Zealand Riding for the Disabled
Lodge Doric Brighton No. 236	Stepping Stone Trust
The Avon Shirley Lodge No. 185	Cancer Society Of New Zealand Canterbury-West Coast Division Incorporated
Lodge Eckford No. 334	The Care Foundation
The Concord Lodge No. 39	PIPS Pregnancy Infancy Parenting Support Trust
The Advance Mawhera Lodge No. 61	Cobden Fire Brigade
The Waitohi Lodge No. 111	Coastguard Marlborough Incorporated

### Southern District Projects

Nelson-Marlborough-West Coast District No. 23	Crossroads (Marlborough) Trust
Canterbury District No. 25	Prostate Cancer Foundation Of New Zealand Incorporated
Otago District No. 30	Alzheimers Otago
Midland District No. 28	Life Education Trust NZ
Nelson-Marlborough-West Coast District No. 23	New Zealand Riding For The Disabled Association Incorporated
Canterbury District No. 25	Christchurch Netball Centre
Otago District No. 30	The Otago Masonic Charitable Trust
Nelson-Marlborough-West Coast District No. 23	Marlborough Group NZ Riding for the Disabled Association Incorporated



	2023 \$	2022 \$
<b>Revenue</b>		
Bequests and donations	421,324	38,868
Investment Income (realised and unrealised)	3,858,648	(3,491,057)
<b>Total Revenue</b>	<b>4,279,973</b>	<b>(3,452,189)</b>
<b>Expenses</b>		
Provisions of goods or services	406,200	245,585
Grants and donations	1,042,346	1,320,782
Other expenses	295,332	308,945
<b>Total Expenses</b>	<b>1,743,877</b>	<b>1,875,312</b>
<b>Surplus for the year</b>	<b>2,536,095</b>	<b>(5,327,501)</b>

	2023 \$	2022 \$
<b>Current Assets</b>		
Bank and Cash	390,423	49,219
Fixed Assets	3,887	–
Investments Loans and Mortgages(current)	339,376	642,859
Investments	37,168,862	34,929,658
<b>Total Assets</b>	<b>37,902,548</b>	<b>35,621,736</b>
<b>Liabilities</b>		
Creditors and accruals	135,423	390,706
<b>Total Liabilities</b>	<b>135,423</b>	<b>390,706</b>
<b>Net Assets/ Accumulated Funds</b>	<b>37,767,125</b>	<b>35,231,030</b>

Signed for and on behalf of the Trustees of The Freemasons Charity who approve these financial statements for issue:



VWBro. M Cadman, Grand Treasurer.



RWBro. N Patrick, Chair Trustee.

Date: 20th September 2022

The Financial Statements are available on the FNZ website <https://freemasonsfnz.org/>





## Helping us *make a difference in New Zealand*

---

*We'd like to acknowledge the many organisations that we work with to help make a difference to people, our communities and country.*





**FREEMASONS**  
New Zealand

[freemasonsnz.org](http://freemasonsnz.org)