

NEW ZEALAND Freemason

Issue 4 (Vol. 52), December 2024



SPECIAL OLYMPICS
NATIONAL SUMMER GAMES
CHRISTCHURCH 2025

PREMIER PARTNER  FREEMASONS
New Zealand



www.freemasonsnz.org



Freedom to enjoy your retirement

Heartland Reverse Mortgages have helped over 23,000 Kiwis live a more comfortable retirement. A reverse mortgage could help you access equity in your home without having to move.

You could use a reverse mortgage for a number of purposes including home improvements, assisting family, medical and healthcare, purchasing a new car, day to day living expenses or unexpected costs. Enjoy considerable flexibility and protection including:



Maintain ownership
of your home



Flexible
drawdown options



No regular
payments required



Designed to provide
you peace of mind

Call our friendly dedicated team today to discuss how a reverse mortgage could help you on **0800 488 740**.

A special fee discount has been negotiated for Freemasons members, please enquire with our Reverse Mortgage Specialists. Heartland Bank Limited's responsible lending criteria, fees and charges apply.



FREEMASONS
New Zealand

HEARTLAND
BANK

In this issue

From the Editor **2**

Grand Installation **3**

From the Grand Master **4**

From the Executive Director **5**

News clips **6**

Grand Master's Visits **6**

Media and social media help attract members! **7**



MAKING A DIFFERENCE IN NEW ZEALAND

New Zealand Freemason helps lift America's Cup! **8**

Waikato Hospital Emergency Packs, thanks to the Freemasons **8**

Kiwis at Grand Installation in Sydney! **9**

Freemasons continue to invest in Hawke's Bay musical talent **9**

Potter Masonic Trust **10**

Freemasonry in the South Pacific **11**

United Grand Lodge of Victoria Grand Installation **11**

Freemasons New Zealand Annual Report **13**

Epilepsy New Zealand **35**



Freemasons Foundation **36**

MASONIC EDUCATION

Discovering Freemasonry: The Deacon **38**

Discovering Freemasonry: The Inner Guard **38**

Two symbols with a connection! **39**

Labour Day, where did it come from? **39**



THE FREEMASONS CHARITY

2025 Special Olympics National Summer Games Christchurch – 10–14 December 2025 **40**

Masonic Villages Trust **42**

Royal Arch **44**

Welcome to our newest Freemasons **47**

Hola New Zealand! **47**

The Last Word! **48**

Service Awards **49**



Making a difference in New Zealand

FREEMASONS NEW ZEALAND

National Office
Unit 2, 22 Tacy Street
Kilbirnie, Wellington 6022
PO Box 6439, Marion Square
Wellington 6141
New Zealand

Ph: +64 4 385 6622

Email: membership@freemasons.nz

communications@freemasons.nz

www.freemasons.nz



The *New Zealand Freemason* is the official journal of the Grand Lodge of Free and Accepted Masons of New Zealand. Unless otherwise indicated, the opinions expressed and the advertising content are those of the authors and do not necessarily reflect the policy of Grand Lodge.

Articles appearing in this journal may be reproduced without permission provided acknowledgement of the source is made and a copy of the publication is forwarded to the Grand Secretary (secretary@freemasons.nz).

Queries or comments regarding subscription or distribution should be addressed to membership@freemasons.nz or the Grand Secretary, PO Box 6439, Marion Square, Wellington 6141. Queries and comments regarding content and advertising should be addressed to the Editor.

Contributions to the magazine, preferably in electronic form (e.g. MS Word documents) are greatly appreciated and should be of interest to a wide audience. Photographs should be high quality, preferably in jpg or tif format. Contributions may be edited in order to fit space available and to achieve overall balance. Letters to the Editor should not exceed 300 words. A guidance sheet for preparation of publishable material is available on request from the Editor. Contributions should be forwarded to communications@freemasons.nz

Freemasons NZ contributions to Duane Williams, Editor
communications@freemasons.nz

Royal Arch contributions to Duane Williams, Editor
gsn@royalarch.org.nz

Magazines are distributed in March, June, September and December. The deadlines for contributions are the first day of February, May, August and November

Layout by Bartlett Projects, Wellington

Printed by Fisher Print Ltd, Palmerston North

Copyright © 2024 Freemasons NZ

ADVERTISING RATES PER ISSUE

Description	Height	Width	Base price	Discounted (4 Issues)
Full page	240mm	175mm	\$1250	\$1000
Half page (vertical)	240mm	85mm	\$650	\$500
Half page (horizontal)	120mm	175mm	\$650	\$500
Banner	75mm	175mm	\$350	\$250
Quarter page	120mm	85mm	\$350	\$250

All figures GST exclusive. For full advertising details contact communications@freemasons.nz

From the Editor

An organisation fit for purpose and with purpose

At the Annual Communication in Auckland, Lodges made the momentous decision to begin the process of making The Grand Lodge of New Zealand—Freemasons New Zealand—fit for purpose.

This is not surprising, as nearly 80% of members surveyed were happy with the proposed changes and the proposed implementation plan.

The organisation is downsizing to match its current membership with a reduced number of Officers of Grand Lodge, Divisions now being just the North and South Islands, proposed Nine Regions (previously Fifteen Districts), Title changes, etc.

The Change Implementation Working Group will work with Lodges throughout the country to see where they might fit into the proposed Regions through a series of Zoom Sessions, Feedback options, and, if necessary, District Meetings.

In 2025, the call for nominations of Grand Master to Grand Tyler will be made, along with the new roles for the Senior and Junior Grand Wardens, the new Grand Superintendents of the Regions, and the backup of Divisional Grand Masters in the implementation period.

The timeframe is tight for the Grand Installation, being nearly a month earlier due to accommodation issues and is being held on Labour Weekend (24-26th October 2025) in Christchurch instead of mid-November 2025.

Initial changes are happening leading up to the Grand Installation in 2025 and will finish at the next Grand Installation in 2028.

Excitingly, Freemasons New Zealand and The Freemason Charity are again supporting the Special Olympics Summer Games as Premier Partners. With the opportunity for members and lodges to support the athletes and clubs throughout New Zealand with funding or support to local clubs and volunteering at the Summer Games.

Take the opportunity to read the Annual Report 2023/24 in the centre of the magazine.

Please take the summer break from Freemasonry to spend special time with our partners, families and friends and return revitalised for the 2025 Masonic Year.

Seasons Greetings, Happy New Year and a safe and enjoyable summer holiday.

RWBro Duane Williams MBE, KCLJ, JP, PGW and GSec

Annual
Communication

2024

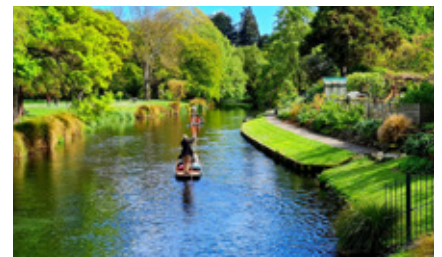




Grand Installation & Communication 2025

This is being held from 24 to 26 October 2025 (Labour Weekend) in Christchurch. It will see the Business Session of the Grand Lodge and the Grand Installation of the new Grand Master and his Officers of the Grand Lodge. Venues include the James Hay Theatre at the Christchurch Town Hall, Te Pae Convention Centre and Crowne Plaza as the preferred hotel.

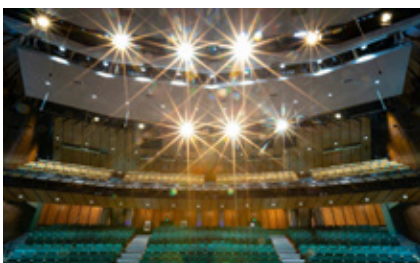
Freemasons and Partners are welcome to attend most of the events:



FRIDAY 24 OCTOBER
Grand Communication
Business Session (NZ Freemasons only)
Meet and Greet



SATURDAY 25 OCTOBER
Grand Installation
Grand Banquet



SUNDAY 26 OCTOBER
Free day for exploring
the wonders of Christchurch

Registration, events and accommodation details in early 2025.
www.freemasons.nz.org/2025-grand-installation-and-grand-communication



FROM THE GRAND MASTER Sunshine, Reflections and Success

On a sunny Wellington afternoon, as I sit to write this article, I reflect on an enjoyable morning spent supporting the Wellington Chapter of the Widows Sons—a Masonic motorcycle group—at their Annual Christmas Tin and Toy Run. This fantastic charity event unites motorbike enthusiasts eager to give back, with each rider contributing a participation fee, a toy, and a tin of food.

The donated toys are passed on to the Salvation Army, spreading joy to disadvantaged children during the Christmas season, while the canned goods are delivered to the DCM (Downtown Community Ministry) and, thanks to the generous backing of the Freemasons Charity, both

the Salvation Army and DCM will receive \$2000 each to support their incredible work in the community.

It's a shining example of Freemasons actively engaging with and supporting their local communities.

Amazingly, I am now two-thirds of the way through my term. It's remarkable how quickly these past two years have flown by. This period has been both busy and productive as we've steadily progressed through the workstream we set ourselves at the beginning of my term.

The recommendations from the All-of-Governance Working Group are now fully implemented, and we are actively working to enact the recommendations from the Masonic Structure and Operational Review Working Group. My personal thanks go to the members of these two working groups for their time, expertise, and the effort they contributed to these two important initiatives.

And it hasn't all been work! Penny and I have had the pleasure of representing you at three Australian Grand Installations in Adelaide, Sydney, and Perth and on each of these occasions we were accompanied by a contingent of New Zealand Brethren.

Closer to home, we've attended numerous functions and events, from lodge centenaries to community engagements,



these have given us the opportunity to connect with so many of you on a personal level, share in your achievements, and to celebrate our Freemasonry with you.

While there are far too many events to list individually, each one has been incredibly enjoyable and a privilege for both of us. Being warmly welcomed wherever we go I would like to thank you for the kindness and generous hospitality that has been extended to us both.

On behalf of us all, I extend my heartfelt thanks to the staff at National Office—Andrew, Duane, Bianca, Jacky, and Debbie—for their dedication and hard work over the past 12 months. They are the heartbeat of Freemasonry, and without their efforts, our Lodges would not be able to function as they do.

I would also like to acknowledge and thank all the brethren who have

stepped forward this year to serve on various committees and workgroups. Your willingness to give your time and energy reflects your deep commitment to the Craft, and your contributions are truly appreciated.

Like so many of you, we have children living offshore, so this year Penny and I are heading to the UK for what is hopefully a white Christmas. Our youngest son Kris now lives and works in London, so we are packing away the shorts and singlets and breaking out the thermals for Christmas in York and Hogmanay in Inverness.

Penny and I extend to you and your loved ones our warmest wishes for a Merry Christmas. May the new year bring health, happiness, and success in all that is meaningful and important to you. Stay safe, and I look forward to seeing you in the new year....

MWBro Jim Watt
Grand Master



What is a Year?



What is a Year

A standard calendar year in New Zealand is a period of 365 days (or 366 days in a leap year), that we use for scheduling and organising time. It starts on January 1 and ends on December 31.

It is typically divided into 12 months, with each month having either 28, 29, 30, or 31 days, depending on the month and whether it is a leap year to account for the Earth's orbital period around the Sun being approximately 365.25 days.

So as the earth is constantly revolving on its axis in its orbit round the sun, and as Freemasonry is universally spread over its surface, it necessarily follows that the sun must always be at its meridian with respect to Freemasonry – a familiar phrase for every Freemason!

Unfortunately, a year measures the passing of time not the granting of extra time and this was recently made real when a very good NZDF friend of mine said to me that he considers time by way of the number

of summers he reckons he has left to enjoy going off caravanning with the family.

That was a bit sobering for sure when, if you think of retiring at say age 65 to collect KiwiSaver, and the average life span of a man is 82 years, then you have 17 summers left.

What a Year we have had!

This year really began in November 2023 at the Special Communication and the start of the year of Transition in respect to our Governance and Structure and completed at the Annual Communication November 2024.

Every one of those months was full of activities all contributing towards improving the efficiency and effectiveness of the administration of FMNZ and support all the activities of every Lodge and every Freemason delivered by National Office.

Some of this year's major deliverables have seen the launch of Masonica, the renegotiation of the

insurance scheme, the recovery of all lodge archives from Iron Mountain, the re-signing of the Special Olympics NZ support arrangements, the use of better technology tools to lower costs and improve administrative efficiencies, the EV charger Pilot, the restructure of ownership in Whakatane, Kapiti and Canterbury Freemasons centres.

Along with the few examples above we have collectively chosen to look at the future of Freemasonry in New Zealand with a more fit for purpose proposal as to structure that will be investigated further over the coming months.

What a Year to look forward to

2025 brings further change with the Board Committees and panels getting themselves up and running - in particular the Strategy Committee.

We also have Grand Installation

in Oct 2025 and with that comes all the administration of the event including appointment processes for Grand Master and Grand Lodge officers etc. It's going to be a busy year with a highlight of Pageantry Tradition and Ceremony to look forward to.

I want to especially thank the National Office team of Jacky, Debbie, Bianca and Duane for all their efforts this year – they are the glue of our organisation with the institutional knowledge to support us in our endeavours.

But before all that happens, take the time to relax, rest, reflect and reset over the holidays, enjoying the sun when it shines.

WBro Andrew Cowie
Executive Director



Making a difference in New Zealand

News clips



The Masonica App – Connecting Freemasons

A new way for Freemasons to connect to our membership system and lots of resources on

Smartphones, tablets, laptops or computers. Find it at www.masonica.co.nz or use the QR code.



Seasons Greetings!

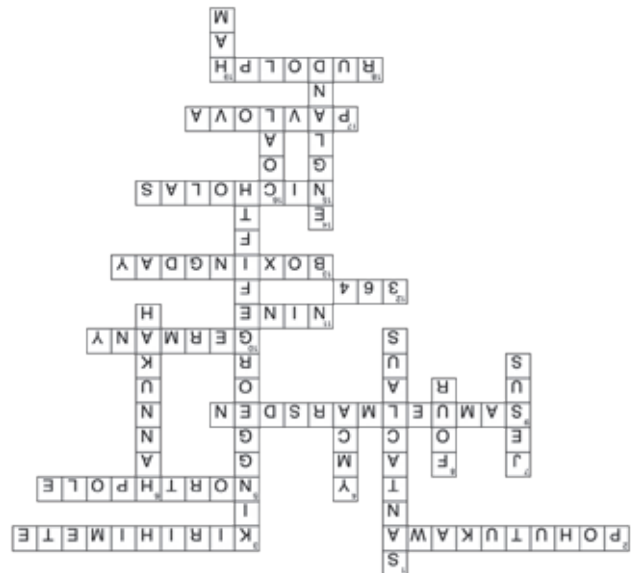
The National Office will be closed from 3 pm on Friday 20th December 2024, reopening at 8.30 am on Monday 6th January 2025.

In an emergency, contact either WBro Andrew Cowie, Executive Director, 021 747 701 or RWBro Duane Williams, PGW, Grand Secretary, 021 051 2020.

Andrew, Debbie, Jacky, Bianca and Duane from the National Office team wish you season's greetings, a happy new year and a safe and enjoyable summer holiday break.



Crossword solution



GRAND MASTER'S VISITS

- | | | | |
|--|---|---|--|
| <p>2024</p> <p>10 Oct Lodge Selwyn No 274 Installation and Centennial Celebration, Ellerslie Freemasons Centre, Auckland</p> <p>24–25 Oct Promotion of WBro Azher Amir to Past Grand Bible Bearer at Lodge Waitohi No 111 at Picton Freemason Centre. RWBro Paul Chappel, Deputy Grand Master as Grand Master's Representative</p> <p>1–3 Nov Grand Installation of the Grand Lodge of Western Australia in Perth, Australia</p> | <p>9 Nov Annual Communication at the Auckland Freemasons Centre</p> <p>26 Nov The 2024 Research Honours Aotearoa for the Royal Society of New Zealand at Parliament</p> <p>27 Nov Investiture of VWBro Craig Ancell as Divisional Grand Almoner – Central at The St Andrews Kilwinning Lodge No 79 at Wanganui Freemasons Centre</p> | <p>3 Dec 50 Year Service Badge to RWBro Kevin Nelson, Past Deputy Grand Master and WBro Layton Battes at Lodge Aquarius No 466, Wellington Freemasons Centre</p> <p>10 Dec Special Olympics National Summer Games 'One Year to Go' Launch in Christchurch with RWBro Paul Chappel, Deputy Grand Master – Freemasons New Zealand is the Principal Partner with funds from The Freemasons Charity</p> | <p>2025</p> <p>15 Feb Constitution of Aurora Lodge No 477 (previously Lodge Homewood No 447 and Lodge Aquarius No 466) at the Petone Freemasons Centre</p> |
|--|---|---|--|

Media and social media help attract members!

A reporter's view

Napier's Scinde Lodge Freemasons on using social media to attract new members successfully.

- ♦ Napier's Scinde Lodge Freemasons have launched a social media campaign to attract younger members amid declining numbers.
- ♦ The campaign's success has brought fresh ideas and energy to the lodge.
- ♦ The Freemasons say they are open to change and evolving with the times.

It felt odd to see an advertisement offering the opportunity to join what is perceived in popular culture as an "insular secret society".

But many men in Hawke's Bay will have seen exactly that when an ad inviting them to join Napier's Scinde Lodge Freemasons popped



up on social media for the past few months.

The advert speaks of the Scinde Lodge Freemasons as "a place where you'll find Brotherhood, opportunity, purpose" and of becoming "not just a man, a Mason".

This is the same group that superstar author Dan Brown vilified in his Robert Langdon series of books, where he made veiled

accusations alluding to Freemasons running the world.

With this in mind, the nervousness started to creep in as I pulled up to Scinde Lodge, an old art deco building that houses Masons in Kennedy Road.

My hands started to sweat as I walked to the door and was introduced to Masons Ian Levet and John Hart, along with Scinde Lodge's Past Master Richard Millea, who welcomed me with firm, typical handshakes and offers of tea or coffee, immediately easing any fears of the salacious rumours I had read in fiction or seen in YouTube documentaries.

"We don't control the world. Look at us - does it look like we could?" quipped Levet as we sat down in the dining room of the lodge.

The Freemasons were established in 1717 in London, England, and since then lodges have been set up across all of civilization.

Members have included George Washington, Winston Churchill, Wolfgang Amadeus Mozart, and even Shaquille O'Neal has boasted of his membership.

The lodge's social media campaign was created for a simple reason, according to Millea. They needed to grow membership after older members started "falling off the end".

PS Some famous New Zealand Freemasons include Richard John Seddon (King Dick), William Ferguson Massey and Sir Keith Jacka Holyoake. All Prime Ministers of New Zealand and all Grand Masters of The Grand Lodge of New Zealand.



Outside Scinde Lodge No 5 (supplied) and Napier's Scinde Lodge Past Master Richard Millea stands in the building's Lodge Room. Photo / Jack Riddell

Published in *HB Today* and the *NZ Herald*, 2 Nov 2024

Making a difference in New Zealand

New Zealand Freemason helps lift America's Cup!

Brother Tommy Leigh was initiated, passed and raised in The Franklin Lodge No. 58 in 2016 and 2017 by his father, Chris Leigh, then Master of that lodge. His grandfather, the late Jack Leigh, former Auckland Star, NZ Women's Weekly and NZ Herald journalist and published author, was a member of Lodge Arawhiti No. 267.

Tommy is an engineering graduate of the University of Auckland, specialising in mechatronics. He started his career in Auckland, working with electric jet boats, before joining Emirates Team New Zealand as a design engineer for the defence of the

America's Cup in Barcelona. His membership in the team

has taken him to Barcelona for several months this year

and last year and to Jeddah, Saudi Arabia.

Also a keen sportsman, Tommy has represented New Zealand in fencing, in such tournaments as the Commonwealth Championships in the UK and at the Asian Championships in South Korea, as well as in other tournaments in Italy and Australia.



Brother Tommy Leigh, Master Mason of The Franklin Lodge No. 58, Counties-Hauraki District No. 5, holding "The Auld Mug" in Barcelona after his team won and retained the Americas Cup in October this year.

Waikato Hospital Emergency Packs, thanks to the Freemasons

Waikato District Lodges - Freemasons New Zealand (including the English

Constitution) provided funds, with the help of The Freemasons Charity, are

supplying male and female hospital packs (toiletries)

for those caught short in an emergency admission.



The toilet bags and the volunteer packers.

Kiwis at Grand Installation in Sydney!

Our Grand Master, MWBro Jim Watt and his New Zealand delegation attended The United Grand Lodge of NSW and ACT - Grand Installation of Most Worshipful Brother B. Khris Albano by MWBro Les Hicks, the outgoing Grand Master, in Sydney over the weekend of 27-29th September 2024.

Events included a meet-and-greet at the Sydney Masonic Centre, the Grand Installation and Banquet at the magnificent Sydney Town Hall, and a Sydney Harbour Cruise and Lunch.

New Zealand and Australia masonic fraternal relations have never been closer.



Can you spot our Grand Master?

Did you know there are six Grand Lodges in Australia?



Freemasons continue to invest in Hawke's Bay musical talent



Talented violinist Isaac Chou from Havelock North

has won the Freemasons Hawke's Bay Young Musician of the Year 2024 at the competition on Friday evening, 13th September, at the Blyth Performing Arts Centre.

Auckland adjudicator Ludwig Treviranus commented that he was impressed by the musical ability and high standards of the local young musicians.

The competition is organised each year by the Hawke's Bay branch of the Institute of Registered Music Teachers NZ for its advanced students aged between 15 and 22 years old.

Isaac was awarded the Freemasons-sponsored Gold scholarship of \$1500 by District Grand Master Eastland-Ruahine District, Kevin Jackson.

Isaac is a student at Lindisfarne College and is actively involved in a variety of music projects, including as first violinist with Hawke's Bay Orchestra. He impressed the adjudicator, Ludwig Treviranus, with a programme of Debussy, Mozart and a challenging solo sonata by Eugène Ysaÿe.

The Crescendo Trust of Aotearoa Music Mentoring and Wellbeing programmes for young people in Auckland

The Crescendo Trust of Aotearoa offers music mentoring and wellbeing programmes for young people aged 15-24 who may not fit into mainstream education settings or may have been referred by other services. Led by industry professionals, for every level and stage of a young person's journey, Crescendo's programmes help young people to positively express themselves and nurture creativity through skills development in songwriting, audio engineering, music production and recording.

The Potter Masonic Trust recently granted \$30,000.00 to Crescendo to support the delivery of music mentoring and wellbeing programmes for young people in Auckland. During the funded period, Crescendo worked directly with 77 young people over approx. 244 workshops, mentoring sessions and 7 events, across the following programmes: Te Urunga, Te Ara, One Voice, Artists in Residence, Apprentice/Internship programme and Holiday workshops.

The following outcomes were achieved through Crescendo's programmes - measured using an evaluation survey and interviews at the end of the programme:

Youth have improved confidence and collaboration skills

- ◆ 85% of students said they gained teamwork and collaboration skills

Youth have improved wellbeing and knowledge of mental health and wellbeing practices

- ◆ 91% of students said they feel comfortable and confident using my new wellbeing skills
- ◆ 57% of students said they had gained self-expression and self-awareness skills
- ◆ 43% said they had gained skills in self-care and wellbeing.

Youth have improved technical skills and knowledge in music or music production

- ◆ 94% of the participants reported they had learned new skills during the programme this included music production, audio engineering and creating lyrics and composing songs.

Youth know career pathways and options available to pursue a career in music.

- ◆ 85% of students said they feel confident about their future options and pathways available to them.

"The number one feedback I get when I talk to the whanau at the quarterly graduations each term are comments like... 'they're nicer to their



sisters, they've got a part time job, they're helping out with babysitting, they're cleaning up more, they're more mindful of checking in on the neighbour'. These ancillary impacts are happening, and we love hearing about this kind of ripple effect, for rangatahi (young people) and in the broader community."

Cat Percy, CEO of Crescendo Trust.

"Thank you to Potter Masonic Trust for your generous support of Crescendo's work. Thanks to you we are able to engage rangatahi through sound, empowering them to discover their own potential and thrive in our communities. Crescendo has grown and strengthened its programmes to reach even more rangatahi and create meaningful pathways for them to move into further education or work."

Pippa Ludek, Crescendo Trust.

Check out this video from Crescendo about their Pathways Programme: youtube.com/watch?v=wuY6dSmwoA4



Tim Bray Theatre Company Providing Equitable Access to Theatre

“The value of a fun and engaging theatre experience when inspiring a child’s future aspirations cannot be understated, when cost is not a barrier, and a live theatre experience leaves a lasting impression.”

The Potter Masonic Trust granted \$19,998.44 to the Tim Bray Theatre Company to fund the purchase of Gift a Seat® tickets. This funding supported the purchase of 516 Gift a Seat® tickets, allowing 516 disadvantaged or disabled children to see the Santa Claus Show '23 and The Great Piratical Rumbustification, for free.

Children attended the live shows from Rosebank School, Ruapotaka School, Flat Bush School, Ramarama School, Manurewa Central School, Mayfield School and Glen Eden Primary School. These schools,

particularly Ramarama, would otherwise struggle to attend shows such as this, especially because funding in the local area has reduced. For example, the Franklin Local Board is no longer providing community funding meaning that Tim Bray Theatre Company is trying to find ways to support schools in this area in other ways.

“Our shows create dynamic experiences for children, coupled with learning opportunities from our free Teacher Resource Guide. This facilitates engagement and learning outcomes from the theatre experience to classrooms. Schools are supported with bespoke Teacher Resource Guides, provided free to paying and Gift a Seat® recipients. These guides provide age appropriate, curriculum based, ready to use activities aimed at



engaging children and optimising the learning outcomes from the theatre experience.”

Sally Warrender, Tim Bray Theatre Company



Freemasonry in the South Pacific



The Grand Lodge of New Zealand

Samoa

Lodge Calliope No 252 in Apia

United Grand Lodge of Queensland

Papua New Guinea

New Guinea Lodge No 292 in Port Moresby

Port Moresby Lodge No 445 in Port Moresby

Mount Hagen Lodge No 308 in Mt Hagen

Madang Lodge No 380 in Madang

Grande Loge Nationale Francaise

Tahiti

Lodge Tiarama No 1867 in Moorea

Lodge Varua No 479 in Pirae

Lodge Te Ora No 578 in Pirae

New Caledonia

Loge Pacifique No 510 in Noumea

Loge L'He de Lumiere No 1280 in Noumea

Loge Recherche Esperance, Verite No 1462 in Noumea

Loge Pacific Fraternity No 1888 in Noumea

United Grand Lodge of England

Papua New Guinea, Vanuatu and Fiji

Rabaul Lodge No 4468 in Rabaul, Papua New Guinea

Lodge of Discovery No 8737 in Port Vila, Vanuatu

Lodge of Fiji No 1931 in Suva, Fiji

Lodge of Lautoka No 3354 in Nadi, Fiji

Grand Lodge of Scotland

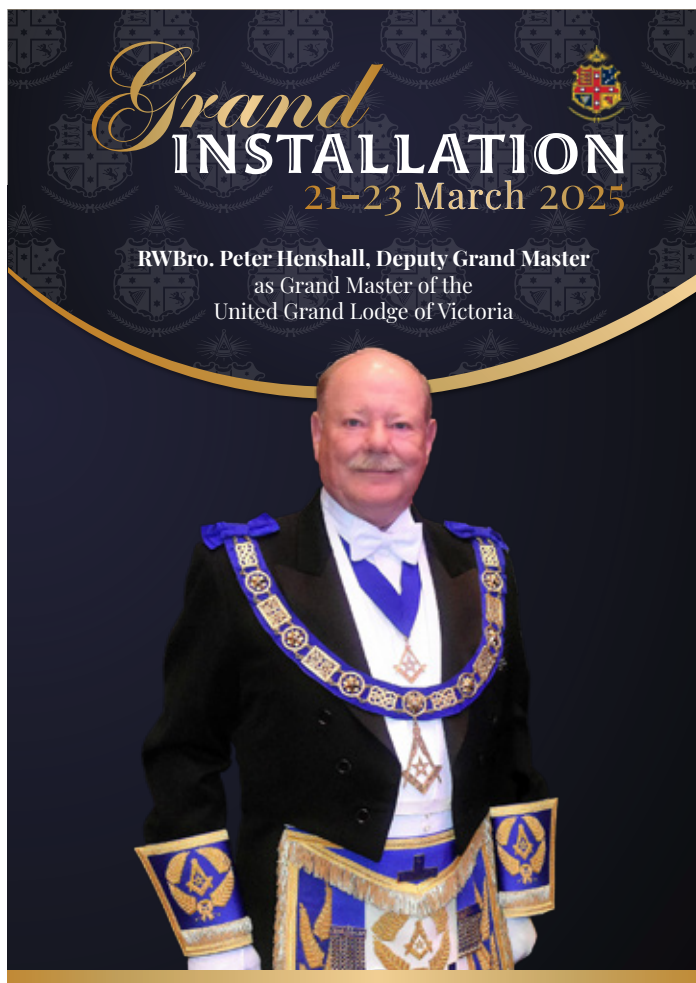
Fiji

Lodge Polynesia No 562 in Suva, Fiji

If you are visiting these countries on holiday or business or moving there for work and you would like to attend a meeting, then through your Lodge Secretary, contact our Grand Secretary at secretary@freemasons.nz.org who will arrange an International Letter of Good Standing and contact details for you.

These are the only South Pacific Lodges recognised by The Grand Lodge of New Zealand other than everywhere in Australia.

United Grand Lodge of Victoria Grand Installation



freemasonsvic.net.au/grandinstallation

Please let our Grand Secretary know if you and your partner want to join our Grand Master and Penny, and the New Zealand delegation to the Grand Installation in Victoria, Australia at secretary@freemasons.nz.org





Freemasons New Zealand

Annual Report 2023–24

Contents

Grand Master's Report	3
Review of Progress	4
Our organisation	6
Meet the Board	8
The Freemasons Charity 2023–24 Report	11
Lodge and District Projects	14
Our membership is stable	17
Freemasons NZ finances	18
Freemasons Charities finances	20

Cover image: Research Officer Felix O'Hagan from the Malaghan Institute of Medical Research and BioOra testing the effectiveness and safety of NZ's first CAR T-cell cancer therapy.

PO Box 6439
Marion Square
Wellington 6141
New Zealand
+64 4 385 6622
secretary@freemasonsnz.org
www.freemasonsnz.org

Grand Master's Report



"Change is the law of life. And those who look only to the past or present are certain to miss the future."— John F. Kennedy

As I have travelled around the country visiting Lodges and engaging with Brethren, I have been deeply encouraged by the positive attitude and enthusiasm that permeate Freemasonry in New Zealand. The recent growth in membership reflects the renewed spirit and dedication of our members and leaders and heralds a promising future for Freemasonry in New Zealand, one marked by unity, a willingness to accept change and one that clearly demonstrates your commitment as Freemasons to ensuring that Freemasonry in New Zealand prospers and thrives.

At the start of 2023, we embarked on a journey to reinvigorate Freemasonry in New Zealand and to align its governance and operational structures with the needs of an organisation of just under 5,000 members. At our Special Communication in November of last year, you, the members, fully endorsed all the recommendations of the All of Governance Review Group. Since then, the Board and the Grand Lodge Trustees have been diligently working through the necessary changes to transition to the proposed new structure. The final implementation will take place at the 2024 Annual Communication with the appointment of the combined Board and Grand Lodge Trustees.

As members you supported the return to an Annual Communication and you supported the various changes that were made to the Masonic Difference and Offence process, all of which will make the management of the Craft that much simpler going forward.

We have implemented significant changes to the management of the various charities that sit under the oversight of the Grand Lodge Trustees. These charities are now all managed by the Charities Management Committee, chaired by the Grand Almoner. This new structure provides us with greater flexibility when allocating funding for projects and supporting those in need.

And consultation is presently underway with the Masonic Structure and Operational Review Working Group who are due to report back with

their recommendations at this year's Annual Communication.

None of this progress would have been possible without the dedication of the Brethren who have generously given of their time and expertise, and I would like to take this opportunity to recognise and sincerely thank each of them for their invaluable contribution to the betterment of the craft.

At our Special Communication, we marked the retirement of RW Bro Mike Cadman PGW as Grand Treasurer, following six years of outstanding service to the Craft. At the beginning of the year our Deputy Grand Master RW Bro Pat Cooney resigned for personal reasons, and it was thus my pleasure to appoint RW Bro Paul Chappel as Deputy Grand Master for the balance of my term. And in May, we were saddened by the passing of our Grand Registrar, RW Bro Noel King PGW, and we acknowledge and deeply appreciate all that he did for the Craft during his tenure as Grand Registrar.

I also wish to recognize the dedication and assistance provided by our Grand Secretary, RW Bro Duane Williams PGW OBE. His commitment exceeds the usual expectations of a Grand Secretary, and I extend my thanks and appreciation to our Executive Director W Bro Andrew Cowie and our National Office team – Debbie, Jacky, Rosalind and Bianca.

Finally, last year we embarked on a transformative journey for the Craft, and as I prepare this report, we find ourselves halfway through this significant endeavour. None of this progress would have been possible without the unwavering support of our members and our Masonic family, our partners.

To each of you, I extend my deepest gratitude for your support and the warm hospitality extended to Penny and myself on our various visits around the country. Your dedication and commitment have been instrumental in driving this transformation forward. We eagerly anticipate sharing the remainder of our term with you, and our continuing to work together towards a brighter future for Freemasonry in New Zealand.

A handwritten signature in black ink, appearing to read "Jim Watt". The signature is fluid and cursive, written over a light blue horizontal line.

MW Bro Jim Watt, Grand Master

Review of Progress



Report from the Board Chairs 2024, July 2023 – June 2024

November 2023 was a significant milestone for our organisation, when the recommendations of the All of Governance Review were adopted at the Special Communication in Wellington. This resulted in a transitional Board of Directors comprising the previous directors and the Grand Lodge Trustees. The larger team of 10, (after the unfortunate death of the Grand Registrar and the resignation of the Deputy Grand Master), have worked collegially together to continue the mission previously articulated.

As our Grand Master has mentioned in his Annual Report the transitional Board will be replaced at the forthcoming Annual Communication by new Grand Lodge Trustees who will also constitute the new seven-member Board of Directors. Recognising the two unique roles, they will operate as both a Board of Directors and Board of Trustees with separate Chairs, like the last 12 months.

In 2023, the Board embarked on a mission to improve efficiency, working tirelessly on initiatives that will significantly impact on the future of our organisation. Particularly the vision to create a brighter and more sustainable future for Freemasons New Zealand.

There are still challenges facing the organisation that cannot be ignored, but with every challenge there is opportunity. As previously enunciated, these involve reducing costs whilst driving greater efficiencies and more effective systems and processes, addressing engagement of brethren across the country through improved communication and providing value through offerings to our members and the Lodges that meet the challenges they face.

We had several aspirations for the past year, many of which we continue to pursue.

Elevating Efficiency and Service

We have continued to target 'financial efficiency' for Freemasons NZ. The national office team have been closely looking at all costs to reduce expenses while upholding our commitment to providing exceptional service to our members and the charitable causes we support.

Revitalising Systems and Processes

Due diligence was undertaken on enhancing our membership database and overall user experience. Acting on options presented by the Technology Working Group, instead of replacing the membership database, the existing database security was strengthened and the Board approved the launch of our digital app, Masonica. We are indebted to RW Russell Pratt PDivGM and his team for this initiative.

Embedding the All of Governance Recommendations

The AoG Review made a number of recommendations to ensure the effectiveness of governance of our organisation. The Board has been focussed on realising these. The framework of committees is now in place, with particularly the Audit & Risk, Property & Insurance and Membership & Growth committees undertaking some great work to address the challenges previously mentioned.

Strengthening Communication

As we noted in 2023 maintaining good relationships with Lodges is paramount. Our goal is to keep every member abreast of crucial decisions, maintaining an environment of trust, clarity, and understanding. The Board is committed to regular communication with our members. The new Masonic app. will greatly assist with this.

Protecting our Assets

Our Grand lodge Trustees have an important role overseeing our assets across the organisation. This last year saw the transfer from the GL Trustees of their responsibilities for Charity funding of the Potter, Lawson Smith and Rankin trusts, to the Charities Management Committee. A big job to hand over and for the Committee to assume control. The year has also seen significant matters in regard to property being addressed, as well as a keener focus on the various Masonic Trusts under their purview. Similarly, all trustees of masonic property have significant

responsibilities and much effort has occurred to educate trustees around New Zealand on their roles. With various Masonic trusts having well over half a billion dollars in value this is important to get right.

Celebrating Leadership

While we acknowledged W Bro Andrew Cowie as our new Executive Director in the 2023 report his arrival occurred in this reporting period. Andrew has hit the ground running using his extensive leadership and management experience to great success. The reorganisation of the staff roles at National Office, the significant review of expenditure, and launch of the EV Charger trial on Masonic property just some of his significant successes during the period. He and his team at National Office continue to work for the betterment of all Masons.

A Salute to Past Contributions

The Grand Master noted changes in several key roles in his report. First, he noted RW Bro Mike Cadman PGW retired as Grand Treasurer in November 2023. In that role he was a Director of the Board for six years, an amazing contribution to the Board and craft. The Grand Master also noted the passing of our Grand Registrar, RW Bro Noel King PGW. In that role he was a Director of the Board for well over four years. The Board owes both Mike and Noel a huge debt of gratitude for their wise counsel over

those years. Similarly, the Grand Master noted the resignation of RW Bro Pat Cooney as Deputy Grand Master. Pat had been on the Board for the previous 12 plus months and had led the All of Governance Review. We thank him for his significant contribution.

There are also four of the current Board team not seeking reappointment. They include RW Bro Steve Salmon PDepGM and RW Bro Eddie Eeles PDepGM, both of whom have been Grand Lodge Trustees since November 2019 and directors for the last 12 months. Also, VW Bro Michael Wooding PDistGM who started as Divisional Appointee for Southern and our Grand Treasurer, VW Bro Graham Law, whose position on the Board has been disestablished. We thank these brethren for their significant contribution to the two Boards during the period. While no longer a director, our Grand Treasurer will continue to provide his excellent advice to the Board going forward.

In summary, the members of the two Boards are committed to continuing their focus on improved assistance to Lodges, reducing costs, prudent management of our resources and improving communication channels. We wish to thank the other members of the Board and Trustees who have committed their time to making Freemasons New Zealand a better organisation. More importantly we thank all Freemasons contributing to the ONE TEAM for their enthusiasm in furthering Freemasonry and the role we play in society.



VW Bro Warwick Bell PDistGM
Chair Board of Directors



RW Bro Neville Patrick PDepGM
Chair Board of Trustees

Our Organisation

The Grand Lodge of Antient, Free and Accepted Masons of New Zealand is an unincorporated Society trading under the name of Freemasons New Zealand. Its 4,700 brethren are members of 173 Lodges across New Zealand. Each Lodge operates under a charter issued by The Grand Lodge. The assets of The Grand Lodge are held in trust by the Grand Lodge Trustees under an act of parliament. These assets include the proceeds from the sale of Lodges held in the Masonic Building Fund to be used for the acquiring and preserving of buildings or land. The Grand Lodge has established a separate registered charity CC46016, with its own trust deed. It's known as The Freemasons Charity and is devoted solely to charity within New Zealand.

A brief history

Freemasonry was established officially when the first Grand Lodge was formed in 1717 in England. In reality, it is much older than that, dating back to late 13th-century stonemasons' guilds.

In 1842, Freemasonry came to New Zealand with Lodges from the English, Irish and Scottish Constitutions.

The Grand Lodge of New Zealand was formed in 1890. As of 30 June 2024, there are 173 Lodges in New Zealand, from Kaitaia to the Bluff, with a total of 4,700 members.

Our vision

To add value to society by supporting good men, their families and their communities.

The principal aim of Freemasonry is the promotion of universal and lasting happiness of all people.

Our principles

Freemasonry is founded upon the principles of tolerance and acceptance, care, kindness, honesty and trust.

For every man who aspires to be a better person, Freemasonry helps you develop the knowledge and skills to be the best you can be – through a unique mix of ceremony, fresh thinking and good works in an enjoyable and supportive environment, because only Freemasonry uses long-proven principles that empower you to unlock your full potential, for a better future.

Our structure and governance

Grand Master

Our ceremonial head is responsible for the overall administration of The Grand Lodge of New Zealand.

Board of Directors

8 appointed members look after The Grand Lodge of New Zealand (governance and policy) between Communications.

Grand Lodge Trustees

Up to 6 members are nominated by the Board of Directors and elected at the Communication. They hold the assets of The Grand Lodge of New Zealand on behalf of its members, monitor investments and administer the Potter, Rankin and Lawson-Smith masonic charitable trusts.

Audit & Risk Committee

An independent committee of the Board of Directors that oversees and advises on financial and other risks. They ensure that The Grand Lodge of New Zealand properly manages its risk and complies with its statutory obligations in New Zealand.

Freemasons Charity Management Committee

An independent committee, established under the Charitable Trust Deed, to administer and manage The Freemasons Charity. It oversees the prudent management of the Trust's investments. It is made up of the Grand Almoner, two appointed members and one person seconded by the Board of Directors.

Changes to governance arrangements in the 2023/24 year

As indicated by the incoming Grand Master, the organisation set about conducting an All of Governance (AoG) Review to ensure that it was fit for purpose and the future.

The AoG review group presented the recommendations at the Special Communication in November 2023 at the Wellesley Hotel in Wellington.

This meant that for the period from November 2023 to November 2024 there is an interim governance arrangement in place whereby the Board and the Trustees meet together, embed the arrangements during the transition and will elect the permanent members of the Board and Trustees in November 2024.

National Office

The Executive Director and team of five provide Membership Services, including Lodge, membership and administration support.

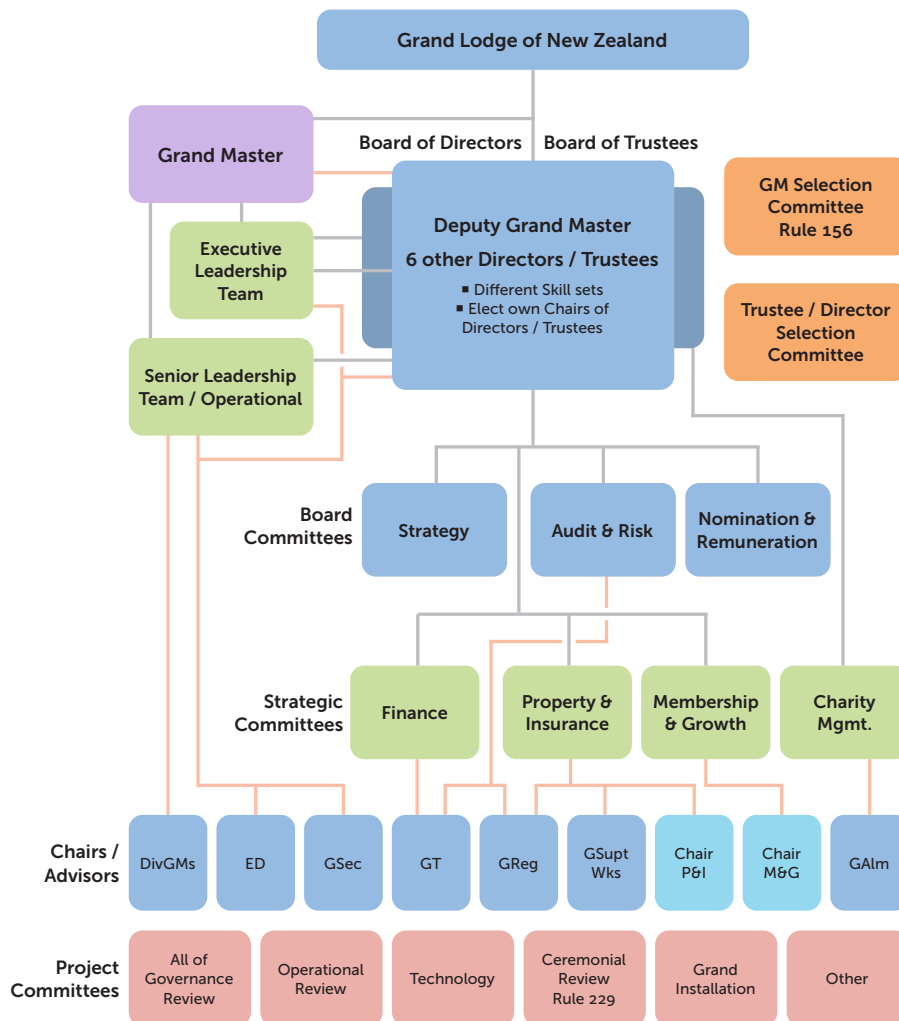
They provide support to The Freemasons Charity and Charitable Trust.

Our National Office promotes Freemasonry through our channels including our Website, Social Media and quarterly Magazine.

The National Office also works with external specialists to deliver our Strategic Plan and key projects.



Freemasons New Zealand Proposed Governance Map



Meet the Board

Directors as of 30 June 2024



Warwick Bell, Chair

Warwick is a Registered Architect and Company Director. He has extensive Board governance and strategic leadership experience.

Including NZQA, NZ Industry Training Federation and as Chair of the NZ Registered Architects Board and Chair of Trustees NZ Scout Youth Foundation. A Freemason since 1989, Warwick is a Past District GM and has held other appointments.



Paul Chappel, Deputy Grand Master

Upon appointment to the position of Deputy Grand Master in 29 Jan 2024, Paul vacated the role of Chair of the Board of Directors. He is also the Past District Grand Master for the Counties-Hauraki District, and he also brings a rich skillset from 27 years in the transport sector and owning a commercial buildings company. His leadership spans 13 years with the National Road Carriers, serving as Vice-President, President, and later Chairman of its parent group.



Graham Law, Grand Treasurer

Graham is currently the Chief Financial & Corporate Officer at NZX Limited. He has considerable experience working across the financial and professional service sectors in New Zealand and the United Kingdom. Graham previously worked in Managing Director and Chief Financial Officer roles, and brings expertise in strategic leadership, corporate governance, and risk and financial management.



David Piper

David has been a Freemason since 2005 and held several positions, including four terms as Master of Lodge Herne Bay United. He was a

District Grand Master for Auckland from 2019-2022 and was appointed to the Board as the Northern Appointee in November 2022 and is also the Chair of the Risk and Audit Committee. Professionally, he has worked in human resources for over 25 years and more recently has led the HR function at Bridgestone NZ for the last 10 years, where his people and change management skills have greatly assisted the Board.



Michael Wooding

Michael is the Southern Division Representative to the Board of General Purposes. Initiated into Freemasonry in 2003, Michael is a member of The Avon Shirley Lodge No. 185 in Christchurch and The Havelock Lodge No. 104 in Blenheim. He is a Past District Grand Master and lives and works in Canterbury as an Air Traffic Controller. He is married to Lesley, and they have two children, Tom and Bronte.

Board changes during the reporting year



Jim Watt, Grand Master (Board member until Nov 2023 now an invitee)

Jim brings a broad range of skills gained from 40-plus years of managing his own event management and hospitality business. He also has a sound knowledge of our Ceremonial Rules and the Book of Constitution.



Pat Cooney, Deputy Grand Master (resigned from Freemasonry 23 Jan 2024)

After an extensive central and local government work history, Pat and his wife Carolyn successfully operated a retail business in Alexandra for 20 years, with their eldest daughter and her husband taking over the business in 2019 after managing it for a number of years. Pat also had eight years of work experience in a chartered accountancy business before retiring in 2020. Governance experience includes being President of the Otago Southland Employers Association, Board member of the then NZ Employers Federation, New Zealand Curling Association, New Zealand Rugby Referees Association, and Catholic Parish Council, as well as local and regional sports club and Lodge roles.



Noel King Grand Registrar (passed away 28 April 2024)

A fourth-generation NZ Freemason, Noel was a Past Master of Mangere Lodge 330 (2004) and a foundation member of Lodge Kauri 474 and Lodge Matariki 476. He was a director of investigations and security companies and a member of the NZ Security Association. Noel qualified with a BBS in accounting and an LLB as a lawyer. He has practised law as a barrister. Noel's unexpected passing is recognised here with the experience and support he provided to the Board during his period of service.

Meet the Trustees

Grand Lodge Trustees and Directors

Neville Patrick, Chair of the Grand Lodge Trustees

Neville Patrick is currently the Chair of the Grand Lodge Trustees and is part of the Executive Leadership Team. Having served in various offices from local ceremonial, national ceremonial and GL Board duties from 2002 through to the present time. During his working life Neville has occupied senior roles in the NZ Defence Force, senior HR roles and Line management in contracting companies and general management positions in Defence/Civilian contracting. With these various positions, Neville brings a wealth of knowledge in people management, risk management, ISO auditing, Leadership and Employment relations.

Graham Wrigley, Grand Lodge Trustee

Graham served as Grand Master in 2019-2022 after which he was appointed as a Grand Lodge Trustee. He has extensive experience in the governance of Freemasonry, having served as a Board member, President of the Board, Deputy Grand Master and then as Grand Master. Outside of Freemasonry, Graham had an extensive New Zealand and international senior Fire Service career for 32 years followed by 25 years with the NZ Red Cross.

Edwin Eeles, JP, Grand Lodge Trustee

Edwin Eeles is currently a Grand Lodge Trustee. He is a Registered Electrical Inspector and was appointed to the Electrical Registration Board, where he served for six years and was elected Presiding Member for the last three years. His management skills involved managing his electrical contracting business for over 45 years before selling the business and retiring. He has served on several non-profit trusts and has been a 'Justice of the Peace' since 2010. He is the Chair of the Auckland Masonic Centre. He is a current member of 'The Ara Lodge No.1' (initiated in 1984), 'Lodge North Harbour No. 182' and 'United Masters No.167'. He has held several Grand Officer positions including District Grand Master, Divisional Grand Master and was appointed Past Deputy Grand Master in 2016

Stephen Salmon, Grand Lodge Trustee

Steve is the Director of a painting contracting company and has been involved within the painting industry for over 50 years. Steve is now semi-retired, with the painting company now managed by his children. Steve has been a Freemason for 40 years and was promoted to PDepGM in 2016. He remains an active member of Hutt Valley Lodge No 176.

Donald Seath, Grand Lodge Trustee

Don Seath is currently a Grand Lodge Trustee and has served in various Lodge and Grand Lodge offices over a period of 53 years. During his working life as a dairy farmer he was elected to the Board of the NZ Co-op Dairy Co. and several dairy industry and agriculture related companies during a period of rapid change. He is a Chartered Member of the NZ Institute of Directors and has applied his governance training to assist Lodges and his District with strategic planning. This knowledge and experience assisted several not-for-profit organisations in re-structuring, reviewing constitutions and amalgamations. He is a member of Lodge Waikato No.475 and Lodge Copernicus No.505.

Attendees

Duane Williams MBE, JP, Grand Secretary

Duane has been a Freemason for nearly 40 years in Papua New Guinea and New Zealand. Professionally, he was an International Banker for most of that time. He has been a Past District Grand Master for Kapiti-Wellington District 2008-10, Grand Secretary since 2018 and continues with several other duties within the National Office, including Manager Operations, Editor of New Zealand Freemason magazine, websites and social media.

Andrew Cowie, Executive Director Nov 23 onwards

Andrew joined as Freemasons New Zealand as Executive Director in November 2023 following a number of roles in the private and public sectors of New Zealand and the UK. He was initiated into Freemasonry in 2011 at Waihenga St Marks Lodge No 37 in Martinborough. He has attended many lodges overseas where he was also a member of the United Grand Lodge of England East Sheen No 4172 whilst living there.

Mark Cassidy Executive Director July 23-Nov 23.

Originally from the UK, where he was a Lawyer, Mark has held senior positions at Public Trust, Wellington Community Trust, Mary Potter Hospice, and the Port Nicholson Rotary Club. He is interested in self-development, building relationships, and helping others. These are qualities that he brings to his role as Executive Director. Mark retired from the position in November 2023 having started in the role in November 2019.

Changes in the Board 1 July 2023 – 30 June 2024 explained

In November 2023 the Special Communication adopted a transitional arrangement that all existing Directors and Grand Lodge trustees (other than the Grand Master) would constitute the Board until November 2024.

The Grand Master was a member of the Board until November 2023 and now attends Board meetings as an invitee.

RW Bro Pat Cooney was a member of the Board until 23 Jan 2024 when he resigned as Deputy Grand Master and from Freemasonry.

VW Bro Noel King Grand Registrar passed away on 28 April 2023.

The three Divisional Appointee roles were disestablished in November 2023 with the appointees continuing as Directors in accordance with transitional arrangements.

Audit and Risk Committee

VW Bro David Plper (Chair)
VW Bro Graham Law
VW Bro Don Seath
VW Bro Darren Shadbolt
W Bro Andrew Cowie (Executive Director in attendance)

The Freemasons Charity Management Committee (TFCMC)

VW Bro Jeff Mear (Chair)
Amanda Chappel (Independent Member)
RW Bro Stephen Salmon
VW Bro Adrian Douglas
W Bro Nick Langley
W Bro Craig Ancell

The Freemasons Charity

2023–24 Report

The 2023–24 financial year saw the change in the governance of the Charities to align all activities under one committee and ensuring the continuing and equitable support for various charitable initiatives that align with our strategic priorities. Here are the key highlights:

Leadership Arrangements

VW Bro Jeff Mear is the appointed Chair of Charities Management Committee (CMC) and is supported by a team of six members including an independent and a Grand Lodge Trustee to ensure that the link between the Committee and the Trustees is maintained.

The five Trustees of Grand Lodge having been appointed at the 2022 Grand Communication continue are now part of the transition period whereby the directors and the trustees form a joint governance board for the organisation. This was a key recommendation from the All of Governance Review conducted in 2023. The appointees will remain in place until the Annual Communication in November 2024 confirms the new arrangements

National-Level Charitable Endeavours

Throughout the 2023–24 financial year, we maintained our steadfast commitment to supporting various national-level charitable initiatives. These included:

- Continued support for CAR-T Cell cancer research conducted by the Malaghan Institute of Medical Research.
- Continued sponsorship of the “Powering Potential” programme facilitated by the Royal Society of New Zealand. The programme involves 4-day workshops, mentored by scientists for Year 12–13 science students who excel in the subject. TFC has committed to continue funding this programme to 2024/25.
- Ongoing backing for the “Camp Purple Live” programme, a vital initiative by Crohn’s and Colitis New Zealand.

- Sustained funding for Freemasons University Scholarships, a tradition extending over 46 years.
- Nurturing young talents through postgraduate Paediatrics and Child Health Fellowships in partnership with the University of Otago, spanning over three decades.
- Support for the Centre of Brain Research at the University of Auckland.
- Empowering Youth Search & Rescue initiatives.

Community Support Initiatives

Local Lodges and Districts continued to demonstrate robust support for community projects. These initiatives often involved local fundraising, supplemented by subsidy support from The Freemasons Charity.

Grand Master’s Cyclone Relief Appeal

Following Cyclone Gabrielle in early 2023 brethren and Lodges across New Zealand embraced the Grand Master’s Cyclone Relief Appeal, raising funds in response to the damage caused by the Cyclone in parts of the North Island. With the funds raised TFC and the Central Division worked alongside the Napier City Council to restore and upgrade Gleeson Park. The park is centrally located in the Napier City Council catchment area and will allow access to the park and upgraded equipment to children from multiple areas affected by the Cyclone Gabrielle disaster.

Special Olympics New Zealand Participation

Following the successful involvement in the rescheduled Freemasons Special Olympics National Summer Games to December 2022, The Freemasons Charity has engaged with the Special Olympics management to establish a funding model to support the volunteers and athletes in summer games years and well as the next Summer Games to be held in Christchurch in 2025. With the support of The Freemasons Charity, Freemasons New Zealand is set to be the Premiere Partner of SONZ Summer Games 2025.

Freemasons University Scholarships

Following the presentation of Freemasons University Scholarships in 2022 and 2023 at the Divisional level, it was a very welcome change to be presenting the Scholarships in the Executive Council Chamber and Grand Hall of NZ Parliament in May 2024.

There were 28 recipients of scholarships.

Benevolence and Almoning

Individual & Critical Needs Grants

TFC assisted 37 individuals by providing funding of **\$38,750** through Critical Needs grants, and a further **\$76,056** with 17 Individuals Assistance grants – totalling **\$114,806**.

Hospital Packs Granted

TFC granted **\$5,719** for Hospital Packs for patients staying in hospital.

Enhancing Our Communities

Lodge & District Projects

TFC supports local Lodge & District community projects by matching funds raised by the Lodge 1:1, a District project may qualify for 2:1 funding from TFC.

Over this period the Lodges supported 85 local and district community projects and raised a total of **\$205,875**.

TFC funded **\$256,579** towards Lodge & District Projects through matched funding.

The scheme in total funded **\$462,454** to charitable and not for profit organisations to support local communities throughout New Zealand.

Over the 2023/24 period...

Northern Division initiated 43 Lodge/District Projects and raised and contributed **\$97,872**.

The Freemasons Charity funded **\$135,842**.

Central Division initiated 28 Lodge/District Projects and raised and contributed **\$70,614**.

The Freemasons Charity funded **\$76,441**.

Southern Division initiated 14 Lodge/District Projects and raised and contributed **\$37,389**.

The Freemasons Charity funded **\$44,550**.

Camp Purple Live – Crohn’s and Colitis NZ

TFC granted **\$20,000** in support of Camp Purple Live 2023 to assist young people living with Crohn’s and Colitis to attend the camp.

Education and Personal Development

Freemasons University Scholarships

The Freemasons Charity funded a total of **\$194,000** to provide the 2024 Freemasons University and Postgraduate Scholarships to 28 students attending University in New Zealand. These scholarships are awarded annually.

Freemasons Orakei Scholarship

The Freemasons Charity, in conjunction with the Auckland Masonic Education Foundation Trust, funds **\$10,000** annually for a Postgraduate Scholarship awarded to a University of Auckland student of engineering or the natural or formal sciences.

Youth Search and Rescue (YSAR) Trust

TFC has reached the end of the 2021–24 Memorandum of Understanding with Youth Search and Rescue Trust (YSAR) to help support the training of young people and other community members through Search and Rescue, and Emergency



2024 Freemasons Orakei Scholarship Recipient Zak Quor.

Management Programmes focused on the skills required to save lives of lost and injured people.

The Freemasons Charity granted a total of **\$100,000** to YSAR over the course of the three-year MoU, with the last payment of \$25,000 being paid out in 2023/24.

NZ Registered Nurses Support Fund – The Masonic Villages Trust

The Freemasons Charity granted **\$50,000** to The Masonic Villages Trust to undertake an initial trial of a training and development programme provided for rest home nurses to achieve their NZ RN training and qualifications. The 2023 programme trial was a resounding success, funding eight (8) recipients to achieve their RN registration, training, and/or qualifications.

Supporting Innovative and Quality Medical Research

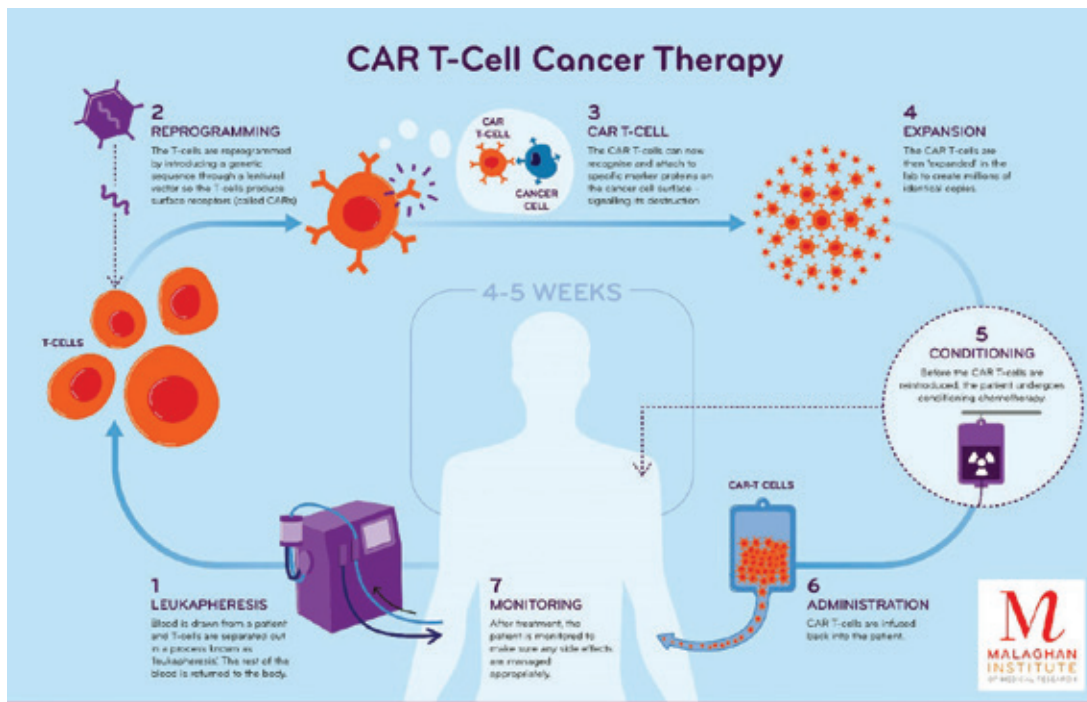
Medical and scientific research has been supported with long term collaborations with the University of Otago, and the Malaghan Institute.

Child Health and Paediatrics Fellowships

The Freemasons Charity granted a total of **\$188,598** to support Child Health and Paediatric research at the University of Otago. TFC contributes annually towards student tuition fees and to research programmes developing innovative studies in Paediatrics.

Malaghan Institute of Medical Research – CAR-T-Cell Research Programme

The Freemasons Charity has been a long-standing supporter of the Malaghan Institute and their innovative medical research. In 2023, TFC and Malaghan established another three-year partnership to provide funding of **\$200,000** annually until 2026.



Lodge and District Projects

Northern Division

Lodge Projects

Lodge Matariki No.476

The Alpha Lodge No. 88

The Ara Lodge No. 1

Lodge of The Liberal Arts No. 500

The Tauranga Lodge No. 125

Lodge Te Papa No. 316

Lodge Matariki No. 476

Lodge Katikati No. 295

Lodge Katikati No. 295

Lodge Hatea No. 431

The Tauranga Lodge No. 125

Lodge Whitianga No. 443

Lodge Orewa No. 370

The Belmont Albion No. 45

Lodge Howick No. 314

Lodge Kororareka No. 304

Lodge Howick No. 314

Wellsford Marsden Lodge No. 169

The Ara Lodge No. 1

Lodge Matariki No. 476

Manukau Westmere Lodge No. 24

The Franklin Lodge No. 58

The Alpha Lodge No. 81

Manukau Westmere Lodge No. 24

The Franklin Lodge No. 58

The Franklin Lodge No. 58

The Onehunga Lodge No. 168

Lodge Katikati No. 295

Papakura Lodge No. 56

The United Lodge No. 340

The Te Aroha Lodge No. 52

Lodge Waitomo No. 469

Auckland Kindergarten Association

The Salvation Army New Zealand

The Scout Association of New Zealand

Auckland Youth Orchestra Incorporated

Wish For Fish Charitable Trust

Philips Search and Rescue Trust

Alan Duff Charitable Foundation

Loved 4 Life

Rotary Club of Katikati Charitable Trust

Hikurangi Friendship House Charitable Trust

Aphasia New Zealand Charitable Trust

Mercury Bay Lions Club Charitable Trust

The Girl Guides Association New Zealand Incorporated

Glass Ceiling Arts Collective Limited

The Upside Downs Education Trust

Russell Sports Club Inc

The Howick Sailing Club

Loaves and Fishes Foodbank Wellsford

Auckland Central Special School

Manurewa Central School

Camp Quality New Zealand

Glenbrook Vintage Railway

The Salvation Army New Zealand

1st Mt Albert St Judes Scout Group

Waiuku College

Pukekohe High School

1st Orakei Sea Scouts

Lodge Calliope No. 252 (Samoa) – AEDs

South Auckland Group Riding For The Disabled Association Inc

Kerepehi Brass Band

Te Aroha And District Health Services Charitable Trust

Otorohanga Riding for the Disabled

District Projects

2 Auckland	West Auckland Hospice
7 Bay of Plenty	Teddies for Loving Care Appeal New Zealand
5 Counties-Hauraki	Teddies for Loving Care Appeal New Zealand
1 Northland	The Northland Emergency Services Trust
2 Auckland	Special Olympics New Zealand
5 Counties-Hauraki	Franklin Hospice Charitable Trust
2 Auckland	Camp Quality New Zealand
7 Bay of Plenty	Western Bay of Plenty Ostomy Society
6 Waikato	Lodge Tawhiri No. 166 – Still Born Boxes
5 Counties-Hauraki	The Middlemore Foundation
5 Counties-Hauraki	Blue Light Ventures Incorporated

Central Division

Lodge Projects

The Rawhiti Lodge No. 66	Community Patrols NZ Waipukurau & Dannevirke
The Woburn Lodge No. 25	CHB Food Bank
Lodge Rangitikei No. 38	The Order of St John Taihape Area Committee
Lodge Otaihape No. 142	The Order of St John Taihape Area Committee
United Lodge of Masterton No. 19	The Parkinson's New Zealand Charitable Trust
Lodge Te Puni No. 315	The Masonic Villages Trust
United Lodge of Masterton No. 19	Heart Kids New Zealand Incorporated
The Coronation Lodge No. 127	Presbyterian Support (Northern)
Herbert Teagle-Taia Lodge No. 300	He Huarahi Tamariki
Waihenga St Marks Lodge No. 37	Fareham Creative Space Trust
The Baden Powell Lodge No. 381	The Scout Youth Foundation
Lodge Zetland No. 312	The Mother Aubert Home of Compassion Trust Board
Lodge Otaihape No. 142	The Order of St John Taihape Area Committee
The St Andrew Kilwinning Lodge No. 79	New Zealand Police Whanganui
The Saint Andrews Lodge No. 32	Mana College
The Manawatu Kilwinning Lodge No. 47	Freemasons Willson Lewis Scholarship
United Horowhenua Lodge No. 464	Horowhenua District Health Transportation Trust
United Horowhenua Lodge No. 464	Riding for the Disabled Levin
United Horowhenua Lodge No. 464	Special Olympics NZ Horowhenua
Lodge Otaihape No. 142	Taihape Taekwondo Club

District Projects

15 Ruapehu

17 Eastland Ruahine

19 Kapiti-Wellington

19 Kapiti-Wellington

21 Hutt Wairarapa

14 Taranaki

17 Eastland Ruahine

19 Kapiti-Wellington

Movember Foundation New Zealand

National Relief Appeal - Napier City Council

The Little Miracles Trust

The Salvation Army New Zealand

Upper Hutt Women's Centre Incorporated

Taranaki Lodges – Audio Aid

Institute of Registered Music Teachers of New Zealand

Wellington Hospitals Foundation

Southern Division

Lodge Projects

The Waitohi Lodge No. 111

The Lodge of Remembrance No. 318

Hercules Lodge No. 36

Unity Lodge No. 271

Coastguard Marlborough Incorporated

Southland Multiple Sclerosis Society Incorporated

West Otago Health Medical Centre & Rest Home

Parafed Canterbury Incorporated

District Projects

23 Nelson-Marlborough-West Coast

23 Nelson-Marlborough-West Coast

25 Canterbury

30 Otago

30 Otago

30 Otago

23 Nelson-Marlborough-West Coast

23 Nelson-Marlborough-West Coast

25 Canterbury

25 Canterbury

The Scout Association of New Zealand

Teddies for Loving Care Appeal New Zealand

Soldiers, Sailors & Airmens Association of New Zealand

Dunedin Night Shelter Trust

Dunedin Masonic Bowls

Ward 7A Respiratory Ward Dunedin Hospital

Whakatu Group Riding for the Disabled Incorporated

Iron Duke Sea Scouts

Christchurch BMX Club

The Scout Association of New Zealand

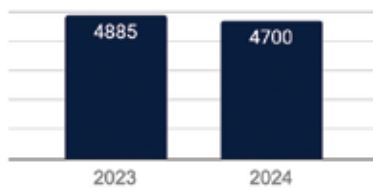
Our membership is stable

Our membership at a glance

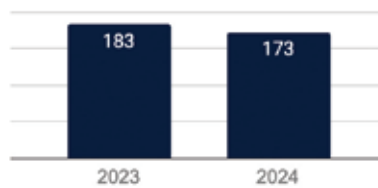
Our total membership has reached a point of stability, despite the reporting numbers below showing a decline of 3.7%. This is due to the number of individuals seeking to join the organisation but not yet processed through at year end not being able to be recorded in this reporting year. Resignations and

deaths remain consistent, though too many younger brethren are resigning. On a positive note, enquiries from potential members have increased from 250 to 275, and by far the largest number of new initiates are under the age of 40 years of age.

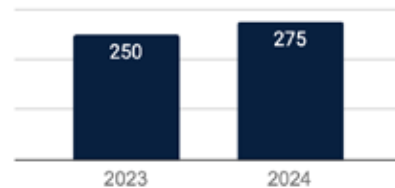
Total membership as at 30 June
Change: -185 (-3.7%)



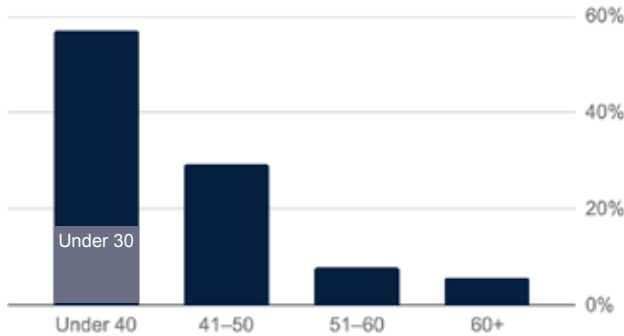
Lodges as at 30 June
Change: -10 (-5.4%)



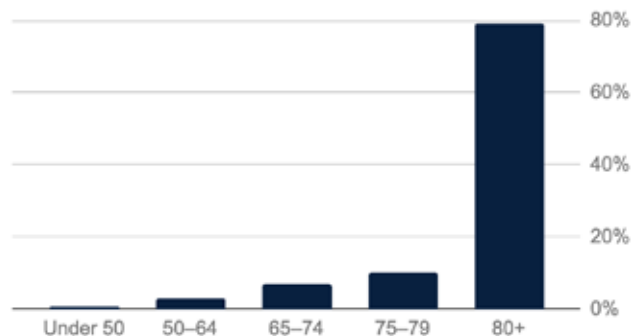
Propositions to join
Change: +25 (+10%)



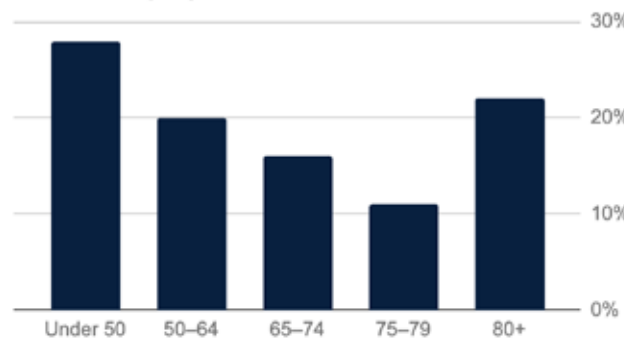
New initiates by age



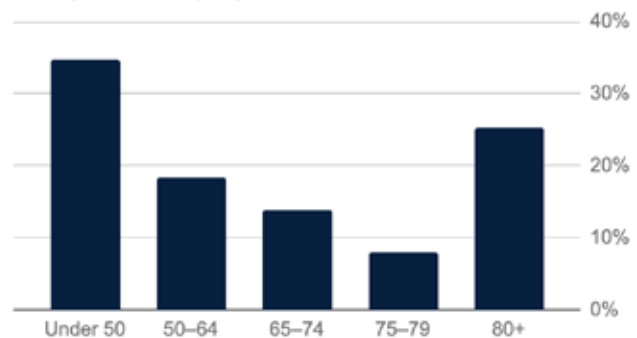
Deaths by age



Members by age



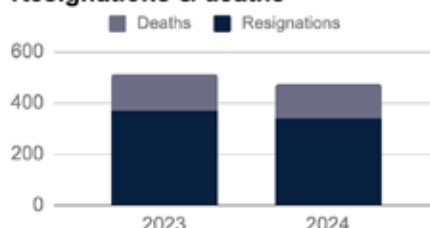
Resignations by age



Initiates & transfers



Resignations & deaths



Freemasons NZ finances

Financial Snapshot for the year ended 30 June 2024

	2024 General Fund \$	2024 Building Fund \$	2024 Total \$	2023 General Fund \$	2023 Building Fund \$	2023 Total \$
Income and Expenses						
<u>Operating Income</u>						
Capitation Fees	456,632	-	456,632	448,403	-	448,403
Other Income (including Administrative Services)	383,800	12,594	396,394	899,892	-	899,892
Member Contributions (net)	-	1,018,402	1,018,402	-	208,247	208,247
Building Fund Loans Interest and Rental Income	-	288,215	288,215	-	379,512	379,512
Total Operating Income	840,432	1,319,211	2,159,643	1,348,295	587,759	1,936,054
<u>Operating Expenses</u>						
National Office	788,001	-	788,001	1,214,848	-	1,214,848
Grand Lodge	189,073	-	189,073	405,598	-	405,598
Strategic Initiatives	39,705	-	39,705	103,894	-	103,894
Building Fund and Property Rental Expenses	-	78,202	78,202	-	106,998	106,998
Total Operating Expenses	1,016,779	78,202	1,094,981	1,724,340	106,998	1,831,338
Operating surplus/(deficit) before tax	(176,347)	1,241,009	1,064,662	(376,045)	480,761	104,716
Interest Received	165,985	18,007	183,992	110,323	2,243	112,566
Brokerage Commission Received	272,622	-	272,622	271,792	-	271,792
Surplus/(deficit) before tax	262,260	1,259,016	1,521,276	6,070	483,004	489,074
Taxation	60,827	1,644	62,471	48,699	475	49,174
Surplus/(Deficit) for the year	201,433	1,257,372	1,458,805	(42,629)	482,529	439,900

Commentary

Freemason New Zealand's general operating activities (i.e. the General Fund) are kept separate to the building operating activities (i.e. the Building Fund).

The **General Fund's** key sources of operating income are capitation fees and charging for administration services performed for various masonic charities and trusts. The General Fund's main operating costs are National Office costs (including staff, IT, administration costs, rent, general insurance etc) and Grand Lodge (including governance costs, ceremonial, annual

communication and strategic initiatives costs). The General Fund runs at an operating loss before non-operating income, which relates to bank interest and commissions from Heartland Bank deposit scheme.

The **Building Fund** charges interest on loans, rents on properties and receives lodge contributions relating to buildings. The Building funds operating expenses are mainly administration fees, property rental costs and EV charger project costs. Resulting in the Building Fund having a surplus in the current year.

Financial Snapshot as at 30 June 2024

	2024 General Fund \$	2024 Building Fund \$	2024 Total \$	2023 General Fund \$	2023 Building Fund \$	2023 Total \$
Net Assets						
Current Assets						
Bank Accounts	3,099,553	1,859,690	4,959,243	2,788,484	164,957	2,953,441
Other Current Assets	95,592	(10,803)	84,790	244,811	214,129	458,940
Total Current Assets	3,195,145	1,848,888	5,044,033	3,033,295	379,086	3,412,381
Non Current Assets						
Building Fund Investments	-	7,960,182	7,960,182	-	7,513,731	7,513,731
Property, Plant & Equipment	126,690	33,901	160,591	132,451	-	132,451
Total Non Current Assets	126,690	7,994,083	8,120,773	132,451	7,513,731	7,646,182
Total Assets	3,321,835	9,842,971	13,164,806	3,165,746	7,892,817	11,058,563
Current Liabilities	146,944	426,545	573,489	192,764	900	193,664
Net Assets	3,174,891	9,416,426	12,591,317	2,972,982	7,891,917	10,864,900

Commentary

Freemason New Zealand's General Fund's net assets are kept separate to the Building Fund's net assets.

The General Fund's operating assets are predominantly in bank balances and deposits.

The Building Fund's investments are in property investments and loans.

Freemasons Charities finances

Financial Snapshot for the year ended 30 June 2024

	2024 Freemasons Charity \$	2024 Potter Masonic Trust \$	2024 Lawson-Smith Education Trust \$	2024 Hugh McDougall Rankin Ed. Trust \$	2024 Total \$
Income and Expenses					
Income					
Investment Income (realised and unrealised)	4,292,482	5,129,652	245,224	274,074	9,941,431
Bequests and Donations	47,825	2,617	-	-	50,442
Total Income	4,340,307	5,132,269	245,224	274,074	9,991,873
Expenses					
Grants, donations and related expenses	1,274,227	1,319,334	55,141	75,287	2,723,990
Other expenses	325,283	296,452	17,643	20,842	660,220
Total Expenses	1,599,511	1,615,786	72,784	96,129	3,384,209
Surplus for the year	2,740,796	3,516,483	172,440	177,945	6,607,664

Commentary

The Freemasons charities all had strong investment returns in 2024. This reflects the long-term investment strategy which matches our long term charitable objectives. The investment income is net of investment management and monitoring costs (including imputation credits not claimed).

Grants, donations and related expenses account for 80% of the charities expenditure. Other expenses includes the administration services fees charged by Freemasons New Zealand National Office.

	2024 Freemasons Charity \$	2024 Potter Masonic Trust \$	2024 Lawson-Smith Education Trust \$	2024 Hugh McDougall Rankin Ed. Trust \$	2024 Total \$
Net Assets					
Investments (current and non-current)	40,490,158	38,170,694	2,140,709	2,524,564	83,326,126
Current Assets (including bank balances)	77,905	28,119	2,584	24,277	132,885
Current Liabilities (accounts payable and accruals)	(60,142)	(13,225)	(3,864)	(10,864)	(88,095)
Net Assets	40,507,921	38,185,588	2,139,429	2,537,977	83,370,915

Commentary

Investments are independently managed by JB Were under a SIPO (Statement of Investment Policy & Objectives) for each charity.

2023	2023	2023	2023	2023
Freemasons	Potter	Lawson-Smith	Hugh McDougall	
Charity	Masonic Trust	Education Trust	Rankin Ed. Trust	Total
\$	\$	\$	\$	\$
4,230,755	3,610,238	219,778	266,148	8,326,918
49,218	3,583	-	-	52,801
4,279,973	3,613,821	219,778	266,148	8,379,719
1,448,546	754,513	48,103	70,641	2,321,802
295,332	263,991	16,332	19,102	594,757
1,743,877	1,018,504	64,435	89,743	2,916,559
2,536,095	2,595,317	155,343	176,405	5,463,160

2023	2023	2023	2023	2023
Freemasons	Potter	Lawson-Smith	Hugh McDougall	
Charity	Masonic Trust	Education Trust	Rankin Ed. Trust	Total
\$	\$	\$	\$	\$
37,508,238	34,737,727	1,959,190	2,341,418	76,546,573
394,310	43,914	14,398	25,293	477,915
(135,423)	(112,537)	(6,598)	(6,680)	(261,238)
37,767,125	34,669,104	1,966,989	2,360,032	76,763,250





An estimated **48,000** New Zealanders have epilepsy.

Epilepsy New Zealand is a registered charity, providing free, confidential support for over 60 years.

Information & Support Services

Call 0800 EPILEPSY
(0800 37 45 37)



Understanding Makes a Difference

Epilepsy is a tendency to have recurrent seizures.

Seizures are caused by uncontrolled electrical activity in the brain.

Seizure symptoms vary greatly. They may involve:

- convulsions or jerking movements
- loss of consciousness
- confusion
- change or loss of awareness
- blank stares
- distorted sensations
- unusual behaviours.

We work to promote the welfare and interests of people living with epilepsy and to increase public awareness of epilepsy.

We work with:

- individuals
- family/whānau
- community groups
- pre-schools, schools or educators
- workplaces
- health agencies
- other professionals.

“Having an Epilepsy New Zealand support worker come to our home, educate on seizure management, recognition and ultimately support with getting back to normal life was great.”

Otago Client

How does it affect people?

Everyone with epilepsy experiences it in a different way.

Epilepsy can develop in people of any gender, ethnicity and age.

Although epilepsy is common it is often misunderstood.

Some people have just one type of seizure while others have several.

Approximately 70% of people with epilepsy control it well with medication.

An important step in managing epilepsy is gaining understanding of the condition.

“Our local Educator has been essential in teaching our family what we need to know in order to manage our daughters epilepsy.”

Manawatu Client

What do we do?

Our nationwide team of educators offers support and information on epilepsy.

Anyone can contact us directly. Our services include:

To individuals and families

- national helpline 0800 37 45 37
- appointments (face-to-face, phone or online.)
- seizure management advice
- information on managing anti-seizure medications
- regional transport advice
- facilitate support and connection
- advice and referrals for other services

To organizations and communities

- training for health professionals, schools community workers, and workplaces
- community awareness
- epilepsy seminars and talks

For more information or to ask about membership or donations

Call **0800 EPILEPSY**

Email **info@epilepsy.org.nz**

Visit **www.epilepsy.org.nz**



Auckland's much loved steam tug **William C Daldy**



The Auckland-based steam tug William C Daldy is the only working steam tug in the Southern Hemisphere. Restored as a working vessel and a valuable part of our marine heritage, the William C Daldy is also a valuable training site for those studying for maritime certification in deck work. The latest project involves working alongside Motat and the Auckland Steam Engine Society to convert the steam tug to wood-based fuel from coal - offering a valuable prototype and testing bed for other coal burning machinery. The Freemasons Foundation helped fund the project, enabling the vintage vessel to retain its current survey and be berthed at Auckland's Maritime Museum Viaduct for all Aucklanders to appreciate and enjoy.

For more information about the William C Daldy Preservation Society, go to www.daldy.co.nz

Exciting year - Manukau Symphony Orchestra

The Manukau Symphony Orchestra (MSO) performed 'Brahm's Double' at the BNZ Theatre, Due Drop Events Centre in July 2024. This concert featured first a world premiere of a work commissioned by the MSO, by young UK composer Sarah Francis Jenkins, performed with a visual background, special lighting, along with recording and videography. The number of string players wanting to participate swelled exceedingly when violin and cello heroes Amalia Hall and Andrew Joyce followed, playing as soloists for Brahm's Double Concerto. The exciting local and international artists brought innovative ideas to the youthful South Auckland region and offered opportunities and challenges for young players. This work was performed and recorded with the assistance of the Freemasons Foundation. Find out more at www.manukausymphony.org.nz



Sarah Francis Jenkins

The Foundation thanks our retiring trustees Mike Cadman and Bill Matheson and welcomes our new trustees.



Shane Paterson: Originally from Timaru, Shane has lived in Auckland since 1997, with a few years away in the UK and China. Shane's career includes working in the Information Technology sector. Shane joined Freemasonry in 2011 and was installed as the Master of the Lodge of Liberal Arts No 500 in 2022.



Gordon McMahon: Gordon has served with the NZ military in NZ and overseas and has had various leadership roles in a range of businesses. Gordon now owns a business supporting the residential construction sector and has been an enthusiastic member of Freemasonry since 1988.

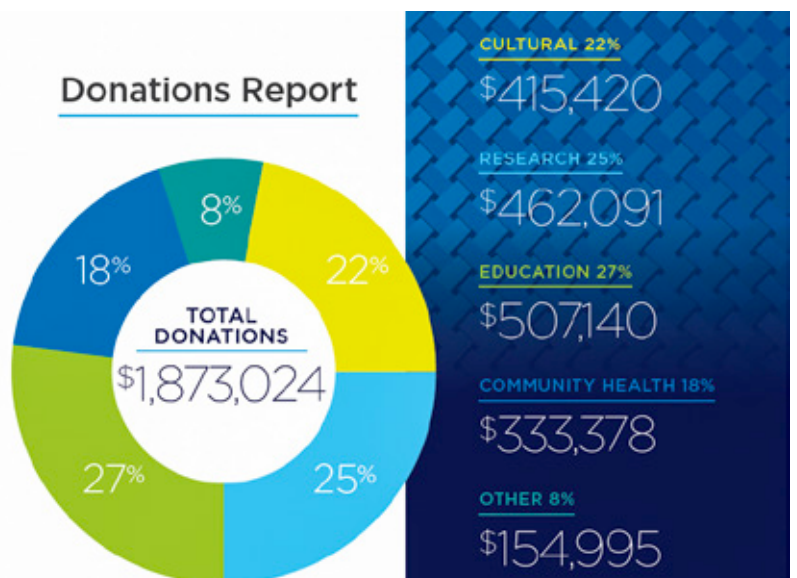
NZ Opera 2025 season

The 2025 Season will be one that honours tradition, while looking boldly to the future. From beloved classics to contemporary works, NZ Opera looks forward to welcoming audiences back as they bring their productions to life on stages across Aotearoa. "Everything we do is driven by three statements: Community is our heart. Audiences are our reason for being. Artist development is our future. We are grateful for the support of our opera whānau, which includes the Foundation." Performances in their 25th anniversary year include Mansfield Park (with TANZOS star Cecilia Zhang), La Bohème and The Monster in the Maze. See the full NZ Opera calendar for 2025 at www.nzopera.com

Freemasons Foundation Annual Report has now been published

The 2024 year was another challenging year, with the financial markets continuing to fluctuate. The year to 30 June saw the Foundation donate \$1,873,024 to registered charities in New Zealand.

Over the last seventeen years our total donations to worthy causes in this country is \$18.8 million.



Discovering Freemasonry: The Deacon



Messenger and Guide: As a Deacon, you act as a bridge between the Worshipful Master and the brethren of the lodge. You convey messages, guide candidates through their degrees, and help uphold the ceremonial flow during meetings.

Supporting Ritual Excellence: Deacons play an essential part in the lodge's ritual and symbolic work. Your movements and actions reflect precision, purpose, and an understanding of Masonic teachings, bringing the ceremonies to life.

Symbol of Guidance: The Deacon's wand, a symbol you carry, signifies your role in leading and providing direction. It reminds you to always guide with integrity and uphold the values of the fraternity.

Growth and Service: Serving as a Deacon allows you to better understand Freemasonry's workings while building relationships with fellow Freemasons. It is often a stepping stone toward leadership positions within the lodge.

Discovering Freemasonry: The Inner Guard

Vigilant Protector: Positioned just inside the lodge's entrance, the Inner Guard ensures the safety of the lodge's activities. It's your duty to admit only those who are qualified and to assist in the smooth flow of ceremonies.

Key Role in Rituals: As the Inner Guard, you assist in maintaining order during lodge meetings. You meet candidates at the door and admit Freemasons on proof.

Symbol of Service: The two swords, often associated with the Inner Guard, symbolize vigilance and the readiness to protect the lodge. It reminds you of the importance of maintaining the sanctity of the proceedings.

Path to Leadership: Starting as an Inner Guard, you begin your journey toward higher roles within the lodge this role. This role provides insight into the workings of the lodge, preparing you for future responsibilities.



Two symbols with a connection!

Both are circumpuncts commonly known as a point within a circle and its origins are in time immemorial.

One Masonic and one Scouting.

One reminds us of a masonic brother being the point and the circle that which he must try to keep his passions and prejudices within, to live his life well.

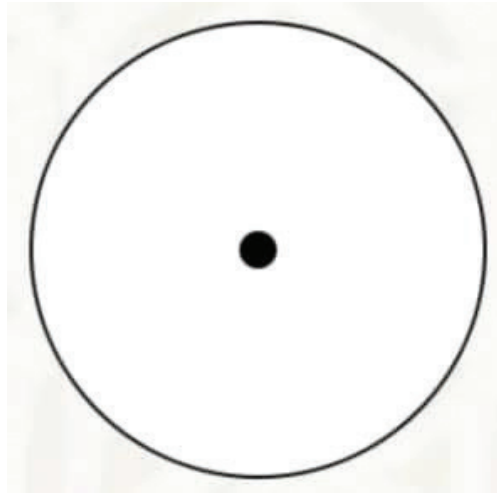
The other one is a tracking sign in Scouting which sign indicates 'gone home' the end of the trail but also used to indicate the

sad passing of a scouting brother.

Freemasonry in New Zealand has a national

Masonic Scouting Lodge in The Baden Powell Lodge No 381 with members from throughout the country.

Two organisations that have come 'full circle' and both work for the good of the World.



Labour Day, where did it come from?

We have a public holiday called Labour Day (4th Monday in October), which in New Zealand gives us a long weekend. How did it come about, and what were its origins?

Labour Day is an annual day of celebration of the achievements of workers. It has its origins in the labour union movement, specifically the eight-hour day movement, which advocated eight hours for work, eight hours for recreation, and eight hours for rest.

The last portion of the previous paragraph has masonic connotations almost, in the first-degree working tools as relates to the 24-inch gauge (written

a long time before Labour Day).

Labour Day celebrates the 1899 adoption of the eight-hour working day and the 48-hour working week as the law in New Zealand, one of the first in the world. Now, a maximum of 8 hours a day and a maximum of 40 hours a week with weekends off (not counting overtime).

Samuel Duncan Parnell was an early New Zealand settler often credited with establishing the eight-hour day in New Zealand. As a carpenter working in Petone, Wellington, in 1840, he refused to work longer than eight hours.

Now you know, so enjoy your holiday established long ago.



2025 Special Olympics National Summer Games Christchurch – 10–14 December 2025

We are happy to announce that Freemasons New Zealand has once again partnered with Special Olympics New Zealand (SONZ), to be the Premier Partner to their 2025 National Summer Games.

Background

Special Olympics New Zealand works to transform the lives of those living with

an intellectual disability in Aotearoa by providing sport, leadership and health programmes specifically designed to enrich and celebrate not just their lives, but the family and wider community through inclusion.

SONZ' vision is to ensure all New Zealanders with an intellectual disability have:

- A sense of belonging and being valued
- The opportunity to participate and compete in sports
- The best health outcomes as possible
- The opportunity to maximise their personal potential
- The chance to live in an inclusive and welcoming New Zealand and share their lives alongside their communities

charitable trusts, meaning that funds raised by a Lodge/District can and should be designated to a particular SONZ Club. All funds raised will be paid out directly to the Lodge/Districts' chosen SONZ Club.

The Freemasons Charity will provide a 1:1 subsidy for Lodges, or a 2:1 subsidy for Districts (to a maximum of \$5,000). More information on how to apply for TFC fund- matching to come.

FAQs

Why are FMNZ and SONZ collaborating on this sponsorship? This is a mutually beneficial partnership where the values of both organisations are closely aligned. The partnership will allow Freemasons to do what they do best, which is engage in and support the community. This will provide much- needed support to SONZ clubs and ultimately will allow more athletes to participate in sports across New Zealand.

The alignment of our core values around inclusion, fun, courage and respect under-pin the relationship. And both organisations

Find out more:

[freemasonsnz.org/special-olympics-2](http://freemasons.nz.org/special-olympics-2)

www.nsg2025.co.nz

Initial Information for Lodges

We are coordinating with the Divisional Grand Almoners and District Charity Officers who will head communication and engagement to the Lodges regarding SONZ Fundraising Initiatives. Lodge Secretaries will be contacted by their District Charity Officer regarding SONZ Sports Clubs and Lodge/District Fundraising Initiatives.

All SONZ Sports Clubs are now independent





SPECIAL OLYMPICS NATIONAL SUMMER GAMES CHRISTCHURCH 2025

PREMIER PARTNER  FREEMASONS
New Zealand



are active in every corner of New Zealand, giving us strong connections across our communities.

What does the sponsorship actually cover? The sponsorship supports the partnership between FMNZ and SONZ over 2024-2026. We are sponsoring the volunteer programme in 2024 and 2026, and the 2025 Special Olympics National Summer Games in Christchurch.

What are the National Summer Games (NSG)? The NSG is the pinnacle event for SONZ. The games occur every four years, in a

different city, with athletes training and preparing for three years to be able to attend. In 2025 they will be held in Christchurch on 10th – 14th December.

We are expecting over 1,300 athletes and coaches from all over New Zealand to compete in 10 different sports at 7 venues. The games are more than just sport, it's an opportunity for athletes to re-connect and make new friends from all over the country. Further information on the NSG can be found here: www.nsg2025.co.nz

What can Freemasons do at the NSG? There are a

wide range of volunteer opportunities that include, volunteer lead/managers, registrations, transport assistance, opening and closing ceremony support and logistics, medal ceremonies, sports

officials, general volunteers, photographers etc. The roles range from ½ day shifts to full day shifts to the full five days of the NSG. Further details will be available shortly.



Freemasons New Zealand Objectives

Build trust and connection within the New Zealand community

Build understanding and support of the Freemasons brand in New Zealand through partnership with SONZ

Grow lodge membership across New Zealand

Our sponsorship is worth \$225,000, from The Freemasons Charity, and we are anticipating that Lodges and members will also get involved with SONZ in a hands-on way - fundraising, volunteering etc.



Barrister and solicitor, Iris Reuvecamp, elected new chair of Masonic Villages Trust

As an independent director of the Boards of Masonic Care Limited and Masonic Villages Limited for the past eight years, I have been privileged to witness, and be involved in, the transformation of the Trust over that time, as led by the Trust Board.

Since 2021, Marie Gillies, a trustee since 2012, has chaired the Trust Board, until her resignation on 2 December 2024.

As chair, Marie has been committed to undertaking a review of the Trust's governance structure, and to achieving the correct balance between maintaining

the Trust's Masonic heritage and adhering to Masonic principles, and securing the external expertise we need to properly support the Trust to continue its mission.

We have made significant progress in this regard, and expect to complete this work by the end of the current financial year. The Trust Board has also, of course, been committed to, and has been successful in, the achievement of its growth strategy, and is on track to meet its objective of increasing the accommodation we offer to 825 units; and the number of older people we support to age well with supportive care to 370, by March 2026.



Wainuiomata Village Hub

Our most recent achievements include the opening of Woburn Masonic Care, a state-of-the-art, beautifully designed, award-winning care facility; the completion of the building of the villas in our Wainuiomata Village; and we are in the midst of building another 108 villas in our Horowhenua Village.

In light of these successes, it is time for the Trust Board to now consider its strategic priorities over the next 5, 10, 20 years and beyond, which will be a strong focus for the Trust Board in the first part of 2025.

In particular, we will be reevaluating how we intend to continue to deliver on our charitable purpose; the articulation and communication of our values; and our strategic intent. We remain committed to our purpose and object of ongoing development and provision of care and services to support the needs of older, ill and/or disabled people, including the provision of accommodation and facilities.

We note also, our ability to focus on associated matters such as the relief of poverty, advancement of education or any other purpose beneficial to the community, including, but not limited to, all purposes relating to the ageing process, and matters affecting older people.

I look forward to chairing a Trust Board that continues to be committed to effecting change to secure the long-term sustainability and longevity of the Trust; and to exploring new possibilities for growth, not just with respect to our assets, but also in the context of ongoing innovation and leadership in the aged care sector, with a view to continuing to make a significant positive contribution to the health and wellbeing of older people in Aotearoa New Zealand.



Woburn Care Suite



Woburn Care Lounge Area



Horowhenua Village New Community Hub*



A Christmas Message

Wishing you joy and peace

As the festive season approaches, I would like to extend my warmest greetings to you and your loved ones. I hope you have a relaxing and refreshing holiday season.

May your Christmas be a time of joy, and love, and may the New Year be filled with new opportunities and successes.

Merry Christmas and a Happy New Year!

The holiday season is traditionally a time when we relax and reflect on the year gone by, time when we make plans for the new year.

I encourage you to take time to think about your Lodge and Chapter, what each has achieved this year, how they have welcomed and supported members and visitors, what they can do in the coming year, what you have contributed, and what you can contribute in the coming year.

As I have gone around the country visiting Chapters I have seen many very enthusiastic Companions.

They are positive, optimistic, and good role models. They are very happy to talk to the Brethren in their Lodges to encourage

them to join the Royal Arch and to point out the benefits of belonging.

Their Chapters are bringing in significant numbers of new members, and there is general enthusiasm at meetings and in refectory.

Supporting Lodges

It is gratifying to see the high level of involvement our Companions have in their Lodges. Not only do they have a high level of involvement, but statistics also show that members of the Royal Arch tend to remain in the Craft longer.

Approximately 17% of Craft brethren in New Zealand are members of the Royal Arch, but currently 39% of current masters of Lodges are members of the Royal Arch. In fact, 36% of all Masters, Wardens and Secretaries of Lodges are Royal Arch Companions.

Attendance of our Companions at Lodge meetings is also high. A recent survey showed that 78% attend their Lodge regularly, 18% had work or health issues preventing them, with only 4% not attending Lodge regularly.

Supporting the Craft

It has often been suggested that a Master Mason should leave joining the Royal Arch until they have been through the chair of their Lodge. However, the majority of new Master Masons leave the Craft within five years, before they have reached this stage. If we are to keep them, we have to interest them in the Craft and the lessons to be learned. We have to mentor and educate all members of the Craft. They have to see there is something more to Freemasonry than simply three ceremonies.

In the Royal Arch, we want to help keep Brethren in the Craft. Master Masons are not lost by joining a Chapter. It is apparent that joining will help them stay involved and contribute to the Craft as a whole.

The Royal Arch has always been an integral part of Pure Antient Masonry. It is a coherent part of the whole structure.

This is probably best expressed by saying: "Pure Antient Masonry in New Zealand has six ceremonies. Three are worked in Craft Lodges which point the way to the remaining three which



are worked in a Royal Arch Chapter".

In the Royal Arch we have put extensive effort into providing all members with the necessary tools to approach Master Masons, to mentor new Companions in their passage through their degrees, and to understand more about the order in general.

With your continued enthusiasm and engagement, I am excited about our future, and have no doubt that this will help us ensure we succeed and remain a thriving organisation.

Standards

As I go around the country, I see that there are many variations of our ceremonies, all based on our standard ritual. It is interesting to hear Companions talking about how their way is the "proper" way. It certainly adds to the joy of visiting.

However, I urge Companions to try and learn the ritual rather than simply reading it. Reading seems to have become the default in some Chapters. I appreciate that some





Companions do not have the time, and others age and have less ability to learn new ritual.

I am concerned that this is often compounded by Companions not being given enough notice to learn, or at least to get close.

To assist, we can break charges down into smaller parts. As a fall-back, if a charge has to be read, at least know enough to be able to still use your voice and hands to emphasise different parts.

In years gone by we would have had someone starting to learn a charge as back-up, who could then do it at the next appropriate meeting.

The other matter which we constantly have to emphasise is having a designated prompter, rather than a number of people jumping in to help.

Once again, I hope you and your loved ones have a happy and relaxing Festive Season.

Master Masons completing the Masonic journey

Clause 71 of the Freemasons NZ Constitution recognizes three Craft degrees: Entered Apprentice, Fellow Craft and Master Mason; plus the three Royal Arch degrees of Mark Master, Excellent Master and Holy Royal Arch as being pure, antient Freemasonry. We warmly welcome these newly-advanced Mark Masters within our Royal Arch fraternity.

01/07/2024	Guy Paine	Waikato No 22
22/08/2024	Leon Nowy	Kaipara-Mahurangi No 80
16/09/2024	Huascar Sidorak Castro	Karangahape No 69
12/10/2024	Aaron Barnden	Victoria No 4
12/10/2024	Allen Clarke	Victoria No 4
15/10/2024	John Busby	Horowhenua 63
15/10/2024	Noel Mason	Horowhenua 63
16/10/2024	Iulian Dianu	Victoria No 4
16/10/2024	Christopher Briden	Victoria No 4
18/11/2024	Dominic Hoffman Dervan	Chapter of Peace No 98



Royal Arch Grand Convocation

HAMILTON 7-8 MARCH 2025

Registration now at

www.trybooking.com/nz/events/landing/13630



QUALITY PAINTING Guaranteed Ltd

For work in the greater Wellington region

Proud to support
Freemasons New Zealand!

The team at QPG Ltd are experienced, efficient, and always professional. You can be sure you will receive a high quality of service, with great attention to detail and clear, accurate quotes.

- Exterior Painting
- Interior Painting
- Commercial
- Residential
- Educational sector work
- Paper hanging
- Spray-painting
- Annual property care programmes

Phone 04 577 2127
or 027 282 7557
Email steve@qpgltd.co.nz

www.qpgltd.co.nz



Need a first aid kit or training? An AED?



Brand new catalogue
OUT NOW!

New Zealand Red Cross
will have something
you'll want to see!

redcrossshop.org.nz



NEW ZEALAND
RED CROSS
RĪPEKA WHERO AOTEAROA

First Aid
Whakaora Whāwhai

Welcome to our newest Freemasons

August–October 2024

Reilly Smith	The Ara Lodge No. 1	Jessie John Duan	Te Awahou Lodge No. 133
Gerald David	The Ara Lodge No. 1	Nigel Pajarillo	The Onehunga Lodge No. 168
Miguel Siazon	New Zealand Pacific No. 2	Malek Gurs	Wellsford Marsden Lodge No. 169
Bernard Bonita	New Zealand Pacific No. 2	Romulo III Pantaleon	Wellsford Marsden Lodge No. 169
Simon Roberts	Scinde Lodge No. 5	Ernesto JR Caldito	Lodge Clinton No. 183
Vergel Timbol	Scinde Lodge No. 5	Panayioti Ioannou	The Avon Shirley Lodge No. 185
Emilio Callelero II	The Beta-Waikato Lodge No. 12	Al Etcarr Etchon	Titirangi Mt Albert Lodge No. 204
Trent Lemmens	The Canterbury Kilwinning Lodge No. 23	Joshua Erueti	Lodge Gisborne No. 233
Jared Adam-Smith	The Canterbury Kilwinning Lodge No. 23	Ashleigh Marks	Lodge Te Puke No. 261
Malcolm MacFarlane	The Phoenix Lodge No. 43	Joshua Beech	Lodge Tuakau No. 278
Benjamin Lagonde	The Belmont Albion Lodge No. 45	Paul Chan	Lodge Nelson No. 288
Emmanuel Garingalao	The Belmont Albion Lodge No. 45	William Comer	Lodge Awatere No. 292
Andrew Collings	The Te Aroha Lodge No. 52	Stephen Clarke	Lodge Zetland No. 312
John Erwin King	The Franklin Lodge No. 58	Roland Uy	Lodge Howick No. 314
Daniel Johnston	The Advance Mawhera Lodge No. 61	Ali Dahche	Lodge Howick No. 314
Stewart Wilson	Lodge Otangaki No. 70	Jose Rastem Eugenio	Lodge Pa-Ka-Ma No. 319
Neil Bryan Semilla	The Heretaunga Lodge No. 73	Madhav Kapila	The Mangere Lodge No. 330
Joseph Gray	The St Andrew Kilwinning Lodge No. 79	East Antoni Ramos	The Mangere Lodge No. 330
Julian Chevalier	The St Andrew Kilwinning Lodge No. 79	Matthias Moersch	Browns Bay Lodge No. 346
Brendan Almenor	Lodge Arrow Kilwinning No. 86	Paolo Antonio Palileo	Browns Bay Lodge No. 346
Reynaldo De Lara	Lodge Arrow Kilwinning No. 86	Beibit Amirgaliyev	The Wayfarers Lodge No. 389
Regidor Supapo	Lodge St John No. 94	Richard Pokoina	Lodge Matariki No. 476
Benjamin Williams	Thistle Lodge No. 113	Arno Human	Lodge Matariki No. 476
Tiezheng Zhuo	The Coronation Lodge No. 127		

Hola New Zealand!

The United Lodge No 340 had the pleasure of a visit from Brother Hugo Criado, an Entered Apprentice Freemason. Brother Hugo was representing his Lodge - Star

of the East Lodge No 8 of the Grand Lodge of the Andes in Colombia, South America.

Bro Hugo attended a meeting where the Immediate Past Master

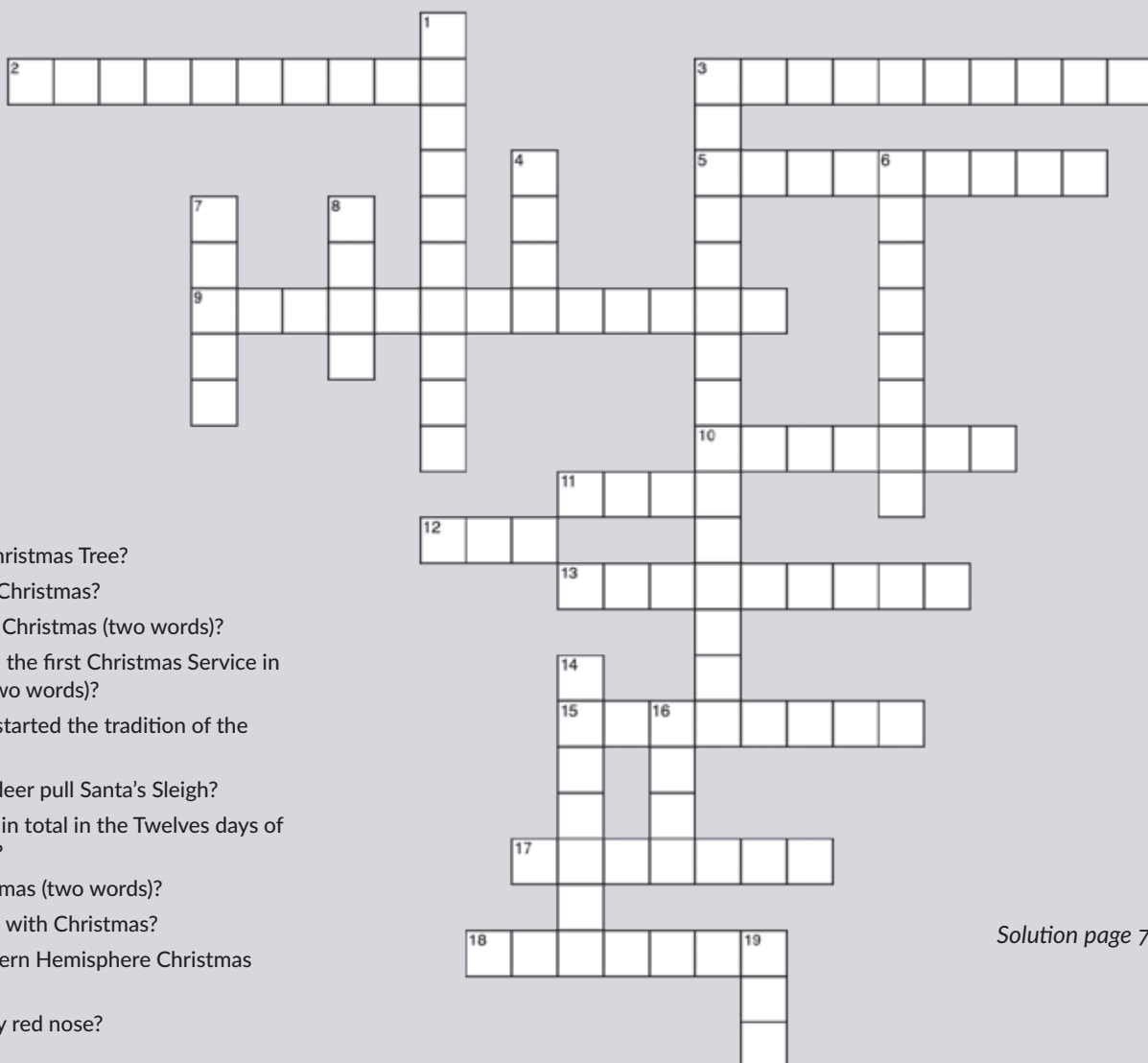
and four Master Masons were presented with their Certificates by the District Grand Master—Auckland, Andrew Alexander. Hugo delivered an address to the Lodge and presented the

Master, Jason Tainsh, with a memento from his Lodge. Jason reciprocated, and Hugo was presented with a commemorative keyring from the Grand Lodge of New Zealand.



The Last Word!

Freemasons New Zealand crossword



ACROSS

- 2 New Zealand Christmas Tree?
- 3 Māori word for Christmas?
- 5 Home of Father Christmas (two words)?
- 9 Who conducted the first Christmas Service in New Zealand (two words)?
- 10 Which country started the tradition of the Christmas Tree?
- 11 How many reindeer pull Santa's Sleigh?
- 12 How many gifts in total in the Twelves days of Christmas song?
- 13 Day after Christmas (two words)?
- 15 Saint associated with Christmas?
- 17 Favourite Southern Hemisphere Christmas Dessert?
- 18 Who had a shiny red nose?

DOWN

- 1 A jolly man associated with Christmas (two words)?
- 3 Which King made the first Christmas Broadcast (three words?)
- 4 Which organisation supplied free cigars, coffee and cake at Christmas to New Zealand soldiers during WWI?
- 6 Jewish Festive Season is called?
- 7 Whose birth is celebrated by Christians at Christmas?
- 8 How many ghosts are in *A Christmas Carol* by Charles Dickens?
- 14 Egg Nog originated in which country?
- 16 What do naughty children get in their Christmas Stockings?
- 19 Popular meat for Christmas Dinner?

Solution page 7



Masonic clock at National Office, using Lodge Officers' jewels to mark the time.

SERVICE AWARDS

August–October 2024

70 YEAR BADGE

Bro Francis Roy Wright MM	United Lodge of Masterton No. 19
VWBro Lyndsay Alexander Smith PGC	Lodge Oamaru Kilwinning No. 82
WBro James Edward Frank Morgan PM RH	The Saint Bathans Lodge No. 126
WBro Robert William Foster Denby PM RH	Lodge Omarunui No. 216

60 YEAR BADGE

WBro Graham Fisher Kent PGBB	The Ara Lodge No. 1
WBro Mervyn Raymond Barker PGO	Lodge of Unanimity Sumner No. 3
Bro Philip Louis Harland MM	The Saint Andrews Lodge No. 32
WBro Trevor John Benson PM	Lodge Otaihape No. 142
WBro Allan Noel George Favel PGD	Waikaka Lodge No. 151
Bro Graham David Marmont MM	Titirangi Mt Albert Lodge No. 204
WBro George Dawson Murphy PM	The United Lodge of Otago No. 448

50 YEAR BADGE

WBro Rowallan Mackenzie Campbell PM	The Ashley Lodge No. 28
WBro John Francis Colton PM RH	Waihenga St Marks Lodge No. 37
WBro Russell Walton Smith PM	The Franklin Lodge No. 58
Bro Ian Robert Thompson MM	The Advance Mawhera Lodge No. 61
WBro Clifford John Hall PM	Lodge St John No. 84
WBro Stewart John Broomhall PM	Lodge Piako No. 160
WBro Charles Ernest Keene PM	Wellsford Marsden Lodge No. 169
WBro Benjamin Thomas Pawsey PM	Lodge Erewhon No. 200
WBro Alistair McKenzie Houston PM	Lodge Takahe No. 397
Bro Noel Douglas Francis Hammonds MM	Lodge Takahe No. 397
VWBro Christopher John Bryant PG Lec	United Horowhenua Lodge No. 464
Bro Terence Edward Ellis-Smith MM	The Lodge of The Liberal Arts No. 500



Invest in the Freemasons Deposit Scheme to invest in New Zealand

Heartland Bank is proud to be the Freemasons Deposit Scheme partner. With roots stretching back to 1875, Heartland Bank has a proud history of providing families, small-to-medium sized businesses and farmers with financial solutions to help them achieve prosperity.

Through our partnerships built on shared values, Heartland Bank is working with Freemasons New Zealand to support the Craft in local communities, while providing Freemasons and their families with competitive interest rates on their deposits.

To discuss your specific requirements, contact a dedicated representative on: **0508 FREEMASONS (0508 37 33 62)** or email freemasons@heartland.co.nz.

Freemasons New Zealand is not a promoter of and does not guarantee the obligations of Heartland Bank Limited in relation to Heartland Bank deposits. Heartland Bank's current Disclosure Statement, Product Fact Sheets and Account and Service General Terms and Conditions are available at heartland.co.nz or by calling 0508 FREEMASONS (0508 37 33 62).



FREEMASONS
New Zealand

HEARTLAND
BANK